



Resilient Architecture

seminar Renovatie & Transformatie

diederendirrix
open architecture
open urban planning

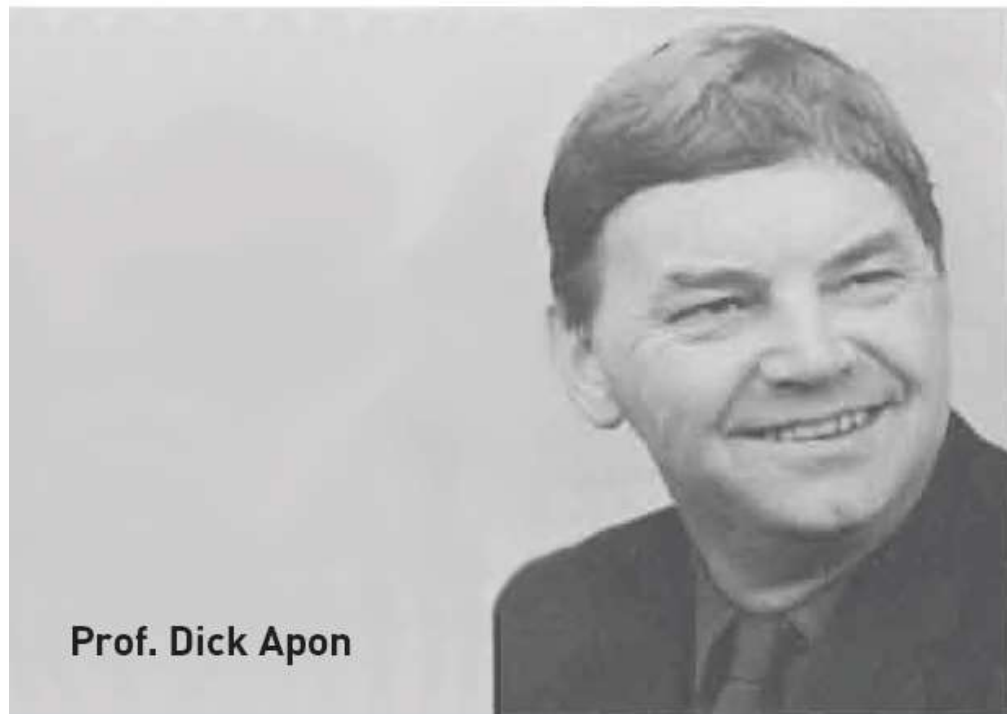
Paul Dieren
Architect / Partner
2 oktober 2018



Prof. Geert Bekaert



ir. Lex Kerssemakers



Prof. Dick Apon



Prof. Jean Leering

Hotel Torrentius
Charles Vandenhove





Architecture pour Architecture
Hôtel Torrentius



Lambert Lombard 1565
Charles Vandenhove 1981

The Entrepot Lainé / Pierre Deschamps (1824)
Valode & Pistre







Daniel Buren
"120 peintures"
1967-1981
Mario Merz
"Che Faro?"
galene L'Attico, F
1990

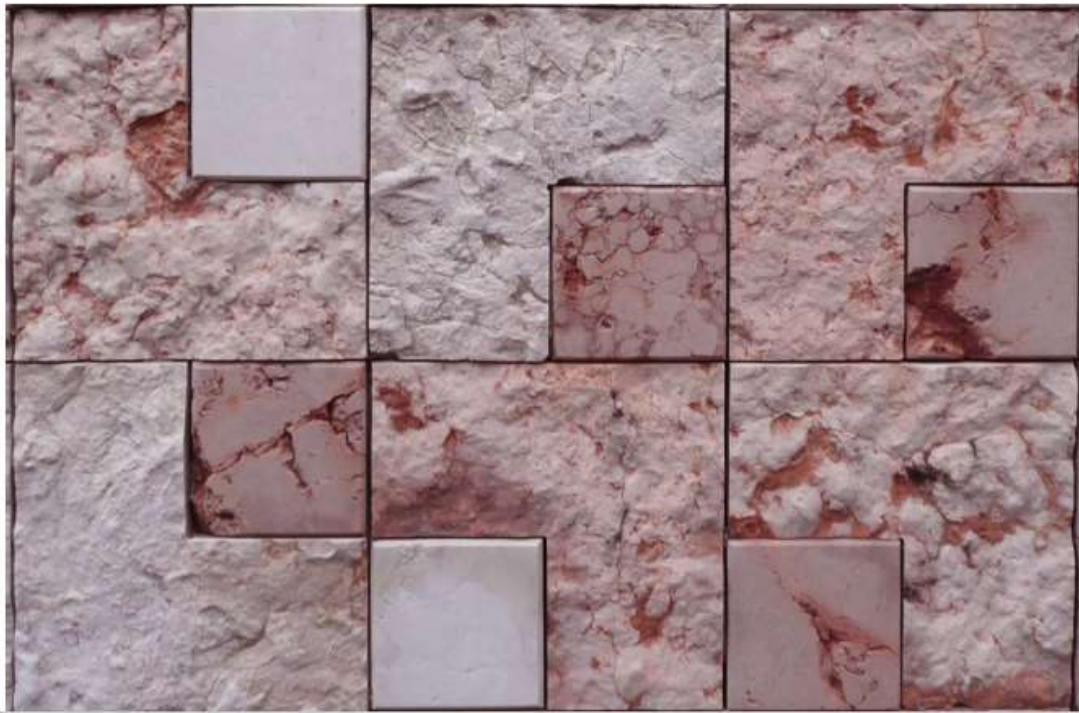
Castelvecchio / Verona
Carlo Scarpa









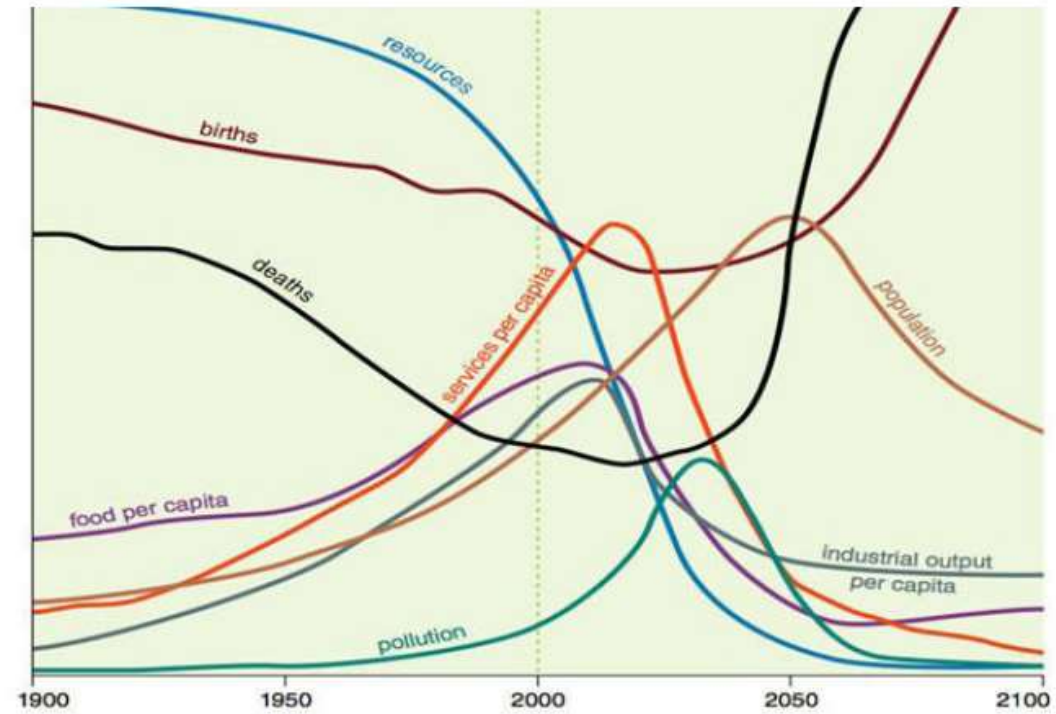
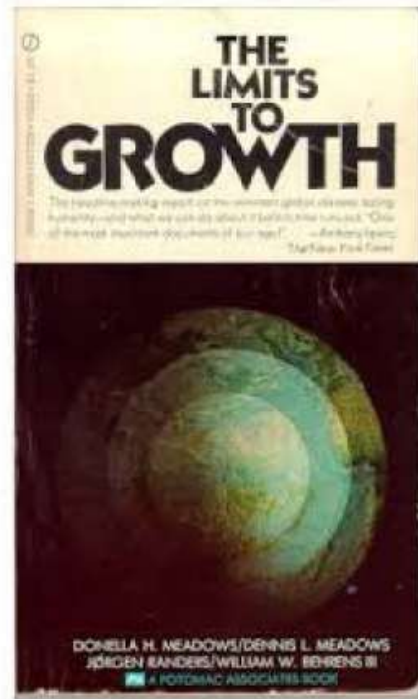


Post-war context



Bird-eye Westelijke Tuinsteden
Algemeen Uitbreidingsplan van Amsterdam, 1934
Architect/ stedenbouwkundige Cornelis van Eesteren

Post-war context

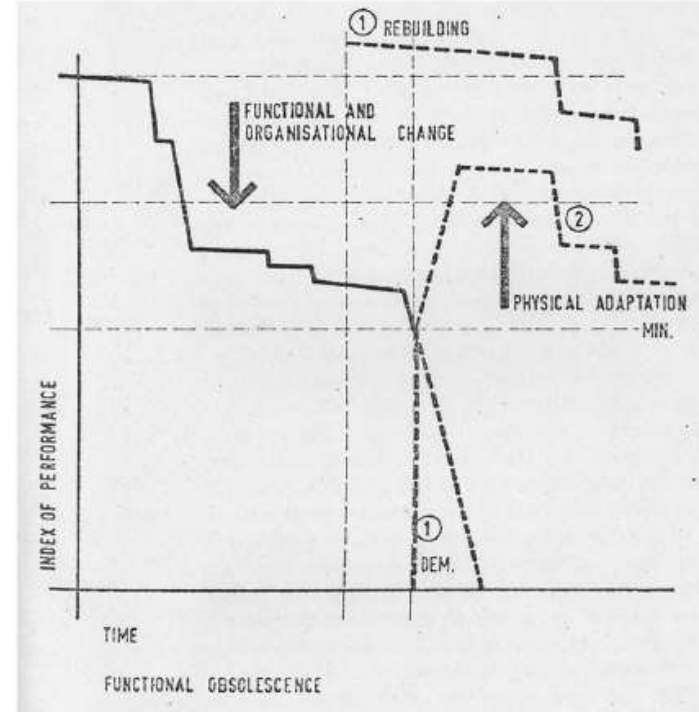


The Limits to Growth: A global challenge
Club van Rome, 1972

Economic beauty

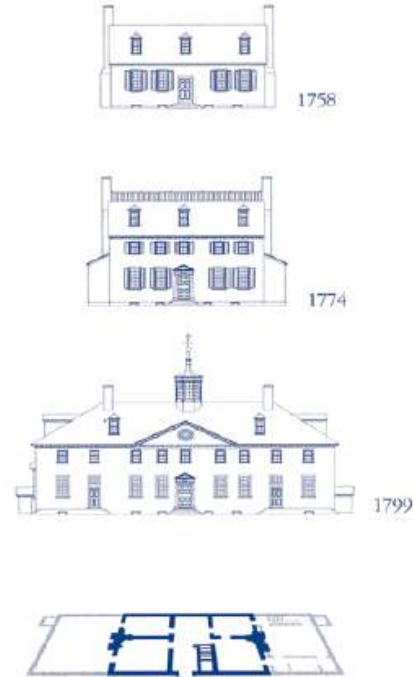


Aurelien Villette
Spirit of Place
teNeues, 2015

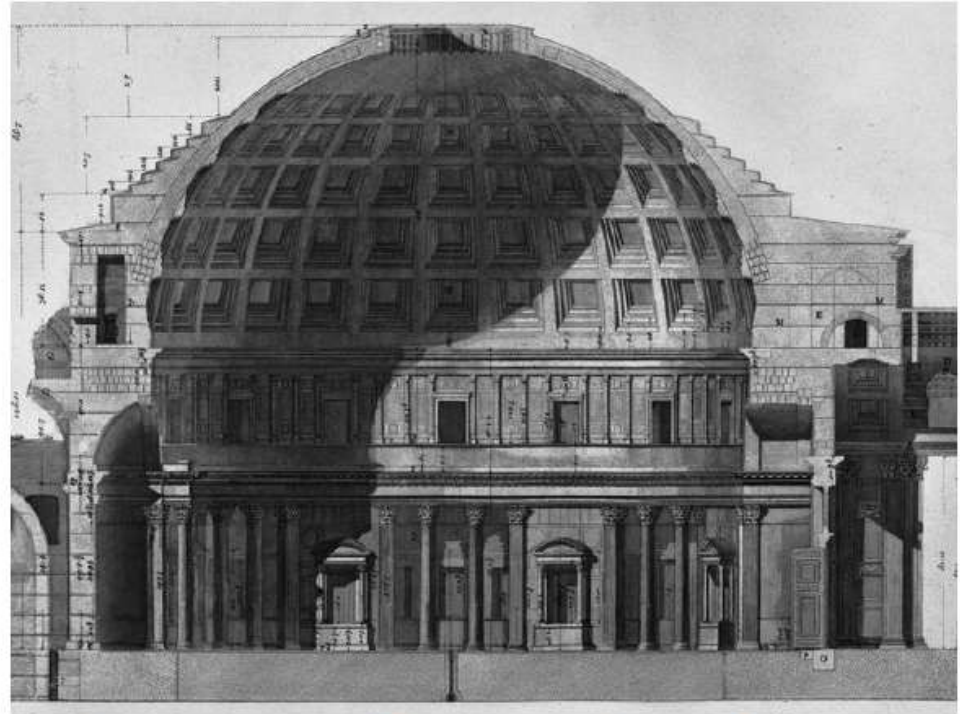


Obsolescence: An Architectural History
Danial M. Abramson
University of Chicago Press, 2016

Economic beauty



Transformation house Mount Vernon
van George Washington in Virginia (VS)
Brand, Stewart Y& Donald Ryan
Penguin Books, 1995



Detail section Pantheon Rome Francesco
Piranesi, 1790
Wikimedia Commons

Economic beauty



Citroën 2CV
5.144.966 produced between 1949 - 1990



Economic beauty



Adolf Loos
(1870-1933)

Loos early 20th century:

An architect is an brick mason who speaks Latin

Loos early 21st century:

An architect is a banker who can create forms

MAKE IT ANEW

MAKE IT ANEW

MAKE IT ANEW

MAKE IT ANEW

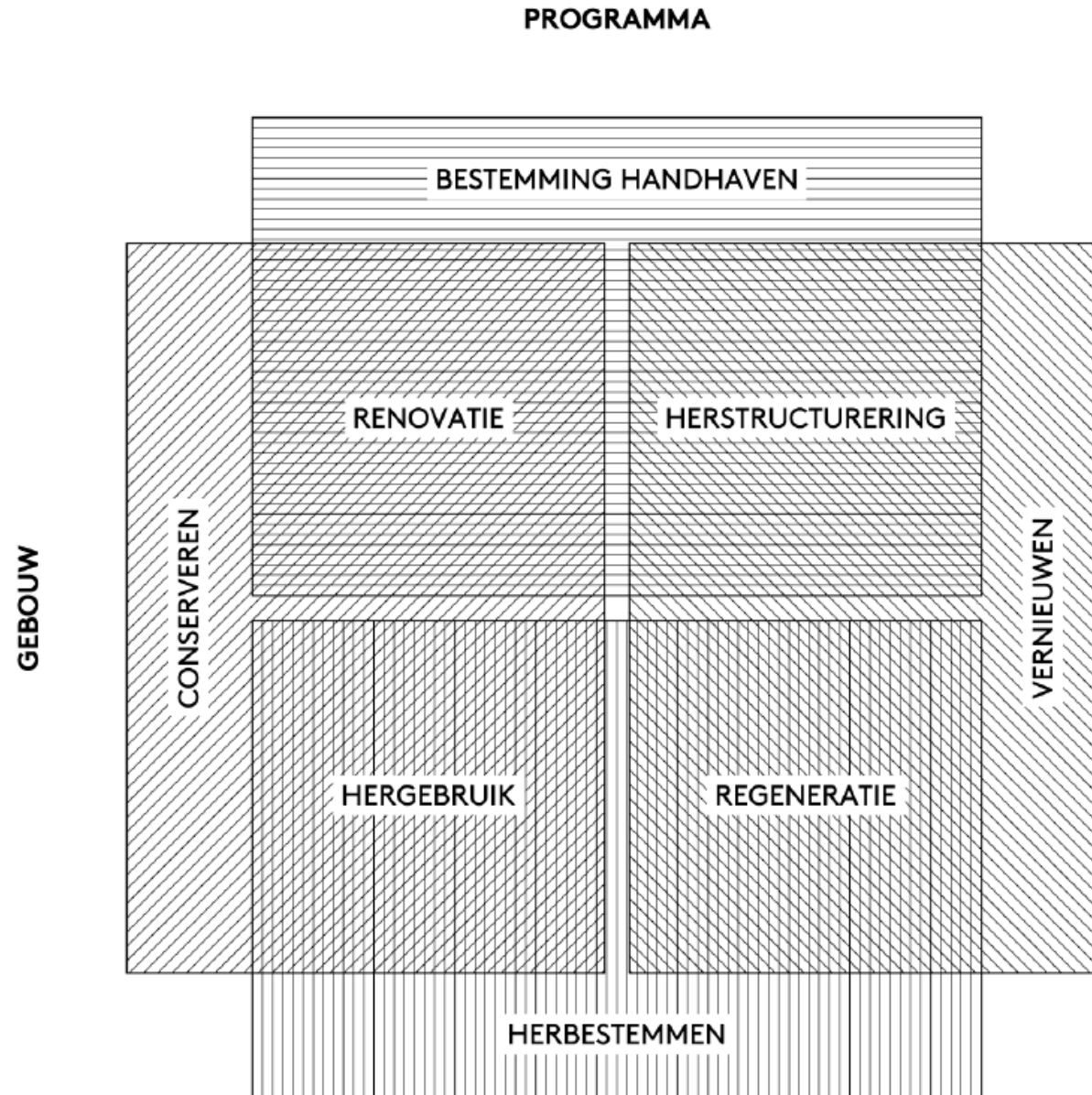
MAKE IT ANEW

MAKE IT ANEW

Hans Ibelings and diderendirix architects

MAKE IT
ANEW

Renovatie, hergebruik, herstructurering & regeneratie





RENOVATIE - DE PLOEG



HERSTRUCTURERING - VERTIGO





REGENERATIE - LIGHTING



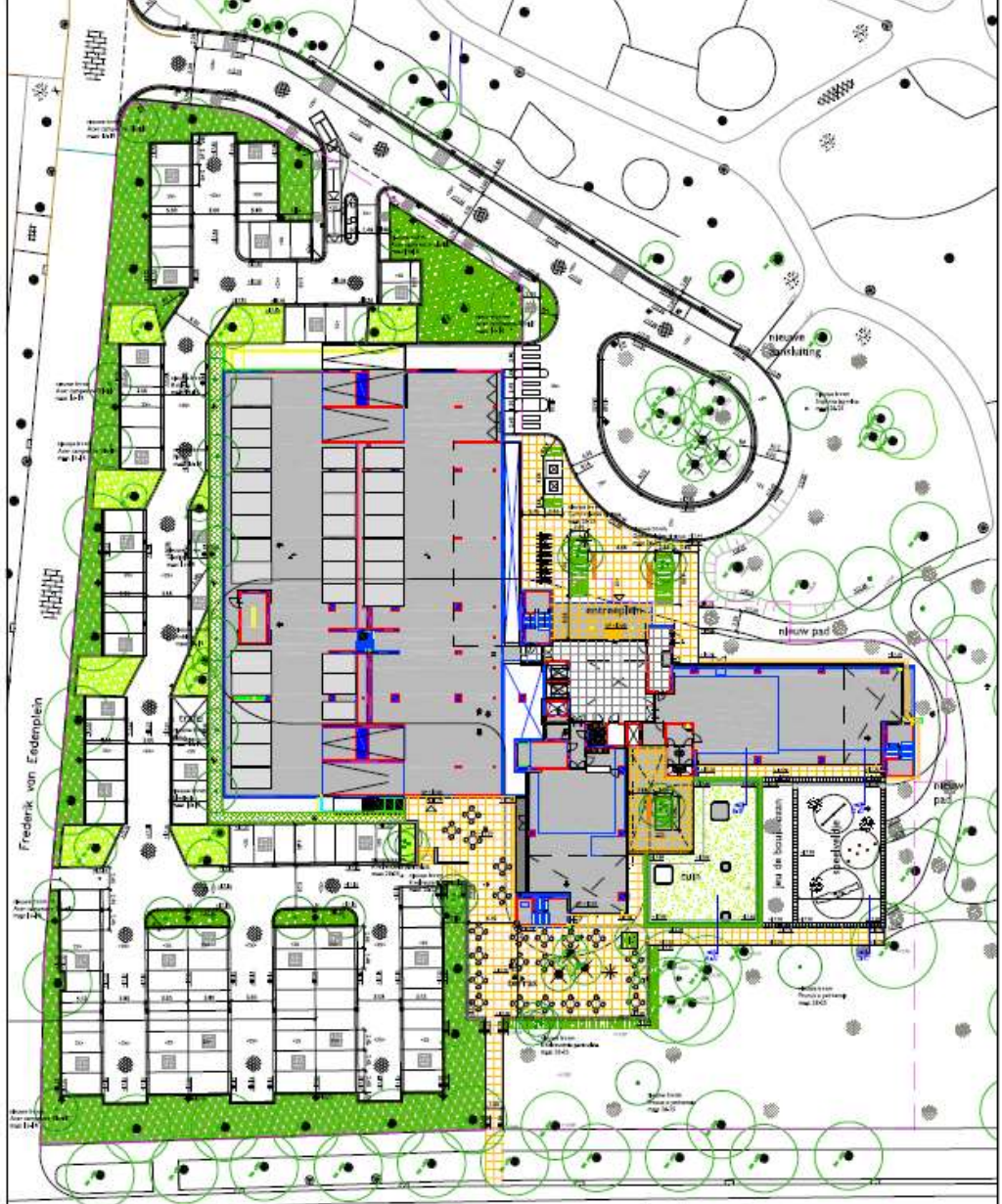
HERGEBRUIK - ANTON



TD Gebouw

157 residential units at the former Technival Service Building



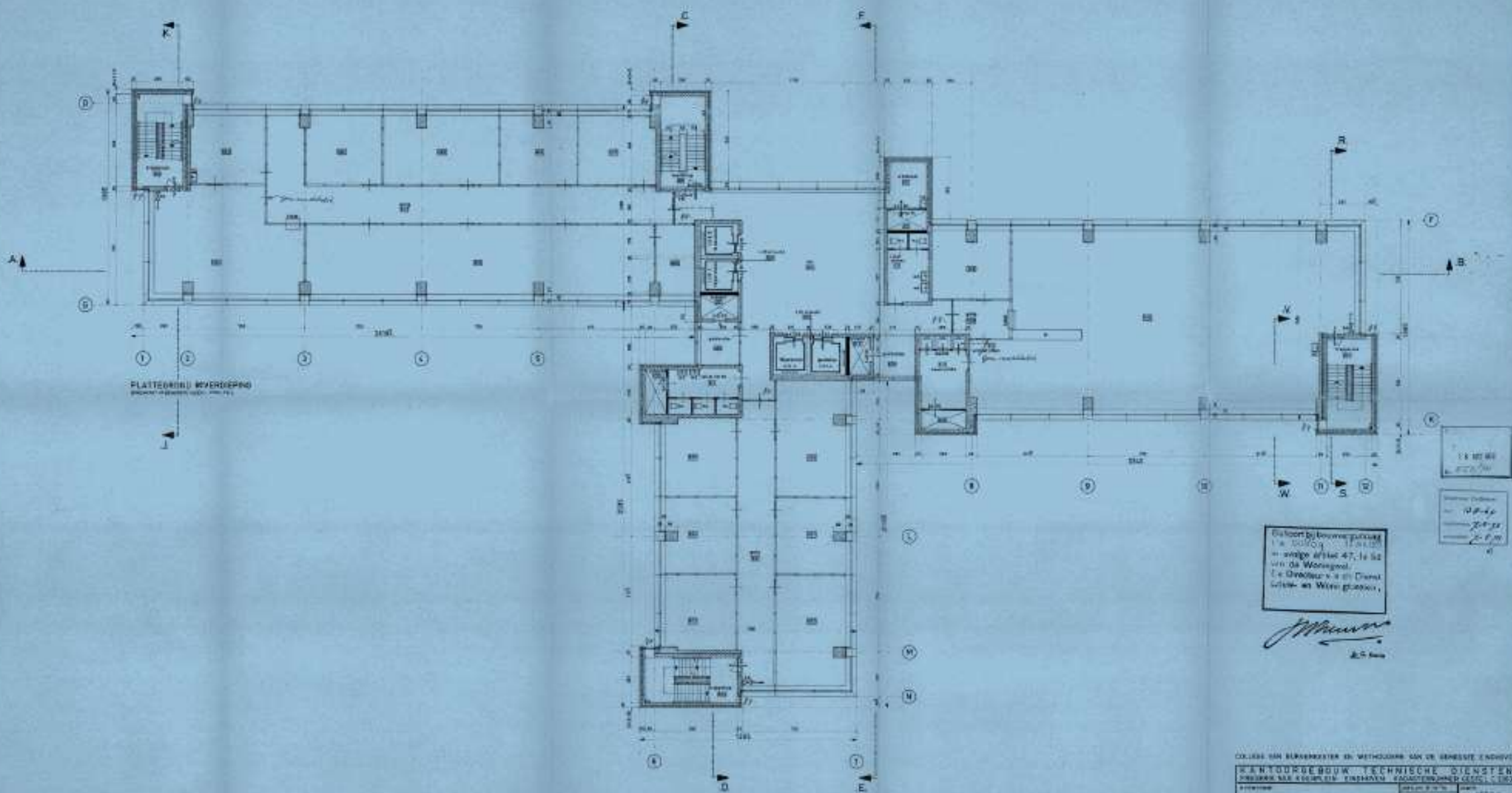


PROJECT		TD gebouw	
ontwerper	DO	ontwerper	DO
opdrachtgever	Foedex & P&G Vastgoed	opdrachtgever	Foedex & P&G Vastgoed
architect	Opbouwstudio	architect	Opbouwstudio
<ul style="list-style-type: none"> ■ aanbesteding ■ ontwerp ■ uitwerking ■ realisatie ■ in gebruik 	<ul style="list-style-type: none"> ■ 148 ■ 149 ■ 150 ■ 151 ■ 152 ■ 153 ■ 154 ■ 155 ■ 156 ■ 157 ■ 158 ■ 159 ■ 160 ■ 161 ■ 162 ■ 163 ■ 164 ■ 165 ■ 166 ■ 167 ■ 168 ■ 169 ■ 170 ■ 171 ■ 172 ■ 173 ■ 174 ■ 175 ■ 176 ■ 177 ■ 178 ■ 179 ■ 180 ■ 181 ■ 182 ■ 183 ■ 184 ■ 185 ■ 186 ■ 187 ■ 188 ■ 189 ■ 190 ■ 191 ■ 192 ■ 193 ■ 194 ■ 195 ■ 196 ■ 197 ■ 198 ■ 199 ■ 200 ■ 201 ■ 202 ■ 203 ■ 204 ■ 205 ■ 206 ■ 207 ■ 208 ■ 209 ■ 210 ■ 211 ■ 212 ■ 213 ■ 214 ■ 215 ■ 216 ■ 217 ■ 218 ■ 219 ■ 220 ■ 221 ■ 222 ■ 223 ■ 224 ■ 225 ■ 226 ■ 227 ■ 228 ■ 229 ■ 230 ■ 231 ■ 232 ■ 233 ■ 234 ■ 235 ■ 236 ■ 237 ■ 238 ■ 239 ■ 240 ■ 241 ■ 242 ■ 243 ■ 244 ■ 245 ■ 246 ■ 247 ■ 248 ■ 249 ■ 250 ■ 251 ■ 252 ■ 253 ■ 254 ■ 255 ■ 256 ■ 257 ■ 258 ■ 259 ■ 260 ■ 261 ■ 262 ■ 263 ■ 264 ■ 265 ■ 266 ■ 267 ■ 268 ■ 269 ■ 270 ■ 271 ■ 272 ■ 273 ■ 274 ■ 275 ■ 276 ■ 277 ■ 278 ■ 279 ■ 280 ■ 281 ■ 282 ■ 283 ■ 284 ■ 285 ■ 286 ■ 287 ■ 288 ■ 289 ■ 290 ■ 291 ■ 292 ■ 293 ■ 294 ■ 295 ■ 296 ■ 297 ■ 298 ■ 299 ■ 300 	<ul style="list-style-type: none"> ■ 148 ■ 149 ■ 150 ■ 151 ■ 152 ■ 153 ■ 154 ■ 155 ■ 156 ■ 157 ■ 158 ■ 159 ■ 160 ■ 161 ■ 162 ■ 163 ■ 164 ■ 165 ■ 166 ■ 167 ■ 168 ■ 169 ■ 170 ■ 171 ■ 172 ■ 173 ■ 174 ■ 175 ■ 176 ■ 177 ■ 178 ■ 179 ■ 180 ■ 181 ■ 182 ■ 183 ■ 184 ■ 185 ■ 186 ■ 187 ■ 188 ■ 189 ■ 190 ■ 191 ■ 192 ■ 193 ■ 194 ■ 195 ■ 196 ■ 197 ■ 198 ■ 199 ■ 200 ■ 201 ■ 202 ■ 203 ■ 204 ■ 205 ■ 206 ■ 207 ■ 208 ■ 209 ■ 210 ■ 211 ■ 212 ■ 213 ■ 214 ■ 215 ■ 216 ■ 217 ■ 218 ■ 219 ■ 220 ■ 221 ■ 222 ■ 223 ■ 224 ■ 225 ■ 226 ■ 227 ■ 228 ■ 229 ■ 230 ■ 231 ■ 232 ■ 233 ■ 234 ■ 235 ■ 236 ■ 237 ■ 238 ■ 239 ■ 240 ■ 241 ■ 242 ■ 243 ■ 244 ■ 245 ■ 246 ■ 247 ■ 248 ■ 249 ■ 250 ■ 251 ■ 252 ■ 253 ■ 254 ■ 255 ■ 256 ■ 257 ■ 258 ■ 259 ■ 260 ■ 261 ■ 262 ■ 263 ■ 264 ■ 265 ■ 266 ■ 267 ■ 268 ■ 269 ■ 270 ■ 271 ■ 272 ■ 273 ■ 274 ■ 275 ■ 276 ■ 277 ■ 278 ■ 279 ■ 280 ■ 281 ■ 282 ■ 283 ■ 284 ■ 285 ■ 286 ■ 287 ■ 288 ■ 289 ■ 290 ■ 291 ■ 292 ■ 293 ■ 294 ■ 295 ■ 296 ■ 297 ■ 298 ■ 299 ■ 300 	<ul style="list-style-type: none"> ■ 148 ■ 149 ■ 150 ■ 151 ■ 152 ■ 153 ■ 154 ■ 155 ■ 156 ■ 157 ■ 158 ■ 159 ■ 160 ■ 161 ■ 162 ■ 163 ■ 164 ■ 165 ■ 166 ■ 167 ■ 168 ■ 169 ■ 170 ■ 171 ■ 172 ■ 173 ■ 174 ■ 175 ■ 176 ■ 177 ■ 178 ■ 179 ■ 180 ■ 181 ■ 182 ■ 183 ■ 184 ■ 185 ■ 186 ■ 187 ■ 188 ■ 189 ■ 190 ■ 191 ■ 192 ■ 193 ■ 194 ■ 195 ■ 196 ■ 197 ■ 198 ■ 199 ■ 200 ■ 201 ■ 202 ■ 203 ■ 204 ■ 205 ■ 206 ■ 207 ■ 208 ■ 209 ■ 210 ■ 211 ■ 212 ■ 213 ■ 214 ■ 215 ■ 216 ■ 217 ■ 218 ■ 219 ■ 220 ■ 221 ■ 222 ■ 223 ■ 224 ■ 225 ■ 226 ■ 227 ■ 228 ■ 229 ■ 230 ■ 231 ■ 232 ■ 233 ■ 234 ■ 235 ■ 236 ■ 237 ■ 238 ■ 239 ■ 240 ■ 241 ■ 242 ■ 243 ■ 244 ■ 245 ■ 246 ■ 247 ■ 248 ■ 249 ■ 250 ■ 251 ■ 252 ■ 253 ■ 254 ■ 255 ■ 256 ■ 257 ■ 258 ■ 259 ■ 260 ■ 261 ■ 262 ■ 263 ■ 264 ■ 265 ■ 266 ■ 267 ■ 268 ■ 269 ■ 270 ■ 271 ■ 272 ■ 273 ■ 274 ■ 275 ■ 276 ■ 277 ■ 278 ■ 279 ■ 280 ■ 281 ■ 282 ■ 283 ■ 284 ■ 285 ■ 286 ■ 287 ■ 288 ■ 289 ■ 290 ■ 291 ■ 292 ■ 293 ■ 294 ■ 295 ■ 296 ■ 297 ■ 298 ■ 299 ■ 300

PROJECT: TD gebouw
 ontwerper: DO
 opdrachtgever: Foedex & P&G Vastgoed
 architect: Opbouwstudio



BURO LUBBERS
 Postbus 111
 3820 BA, Amersfoort
 telefoon: 033-451111
 fax: 033-451112
 e-mail: info@buro-lubbers.nl



PLATTEGROND BIJVERDEPING
 (BETON) (VERBODEN TOEGANG)

De kaart bij deze plattegrond
 is te vinden bij de
 in de wijk 47, te de
 van de Woningdienst.
 De Directeur van de Dienst
 voor de Woningbouw.

J. M. van der Meulen
 A. C. van der Meulen

COLLEGE VAN BUREAUX EN WETGEVING VAN DE GEMEENTE ROTTERDAM

WANTORGEBOUW TECHNISCHE DIENSTEN
 VERLENEN HET EGENDOM VAN HET GEMEENTELIJK ONROEREND GOED (C/O)

PROJECT	PLATTEGROND BIJVERDEPING	JAAR	1953
NUMMER	BT-8	BLAD	1
VERLENEN	1953	BLAD	1
VERLENEN	1953	BLAD	1

ARCHITECTEN: H. VAN DER MEULEN, H. VAN DER MEULEN, H. VAN DER MEULEN



concrete core



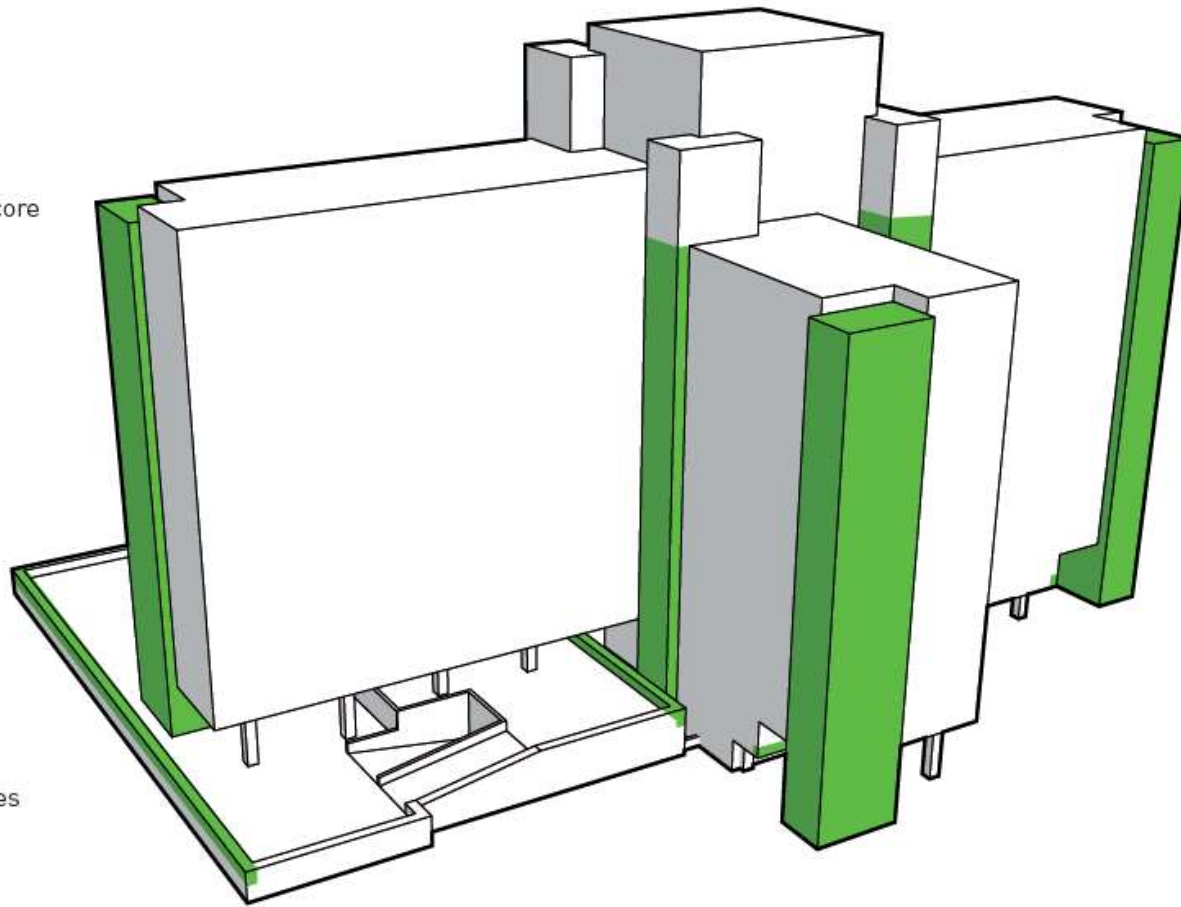
entrance



balustrades



concrete edge





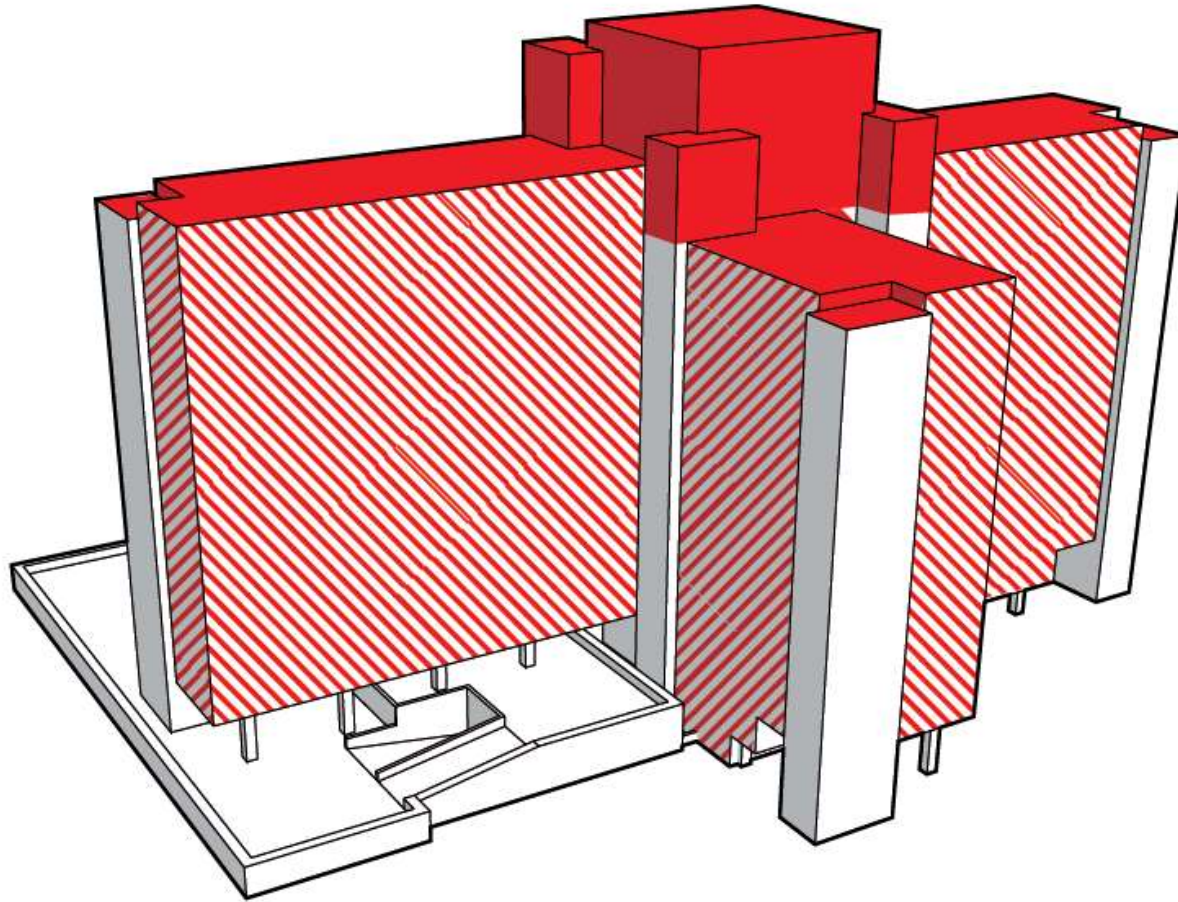
facades



roof



roof and technical services



VAAS AALTO

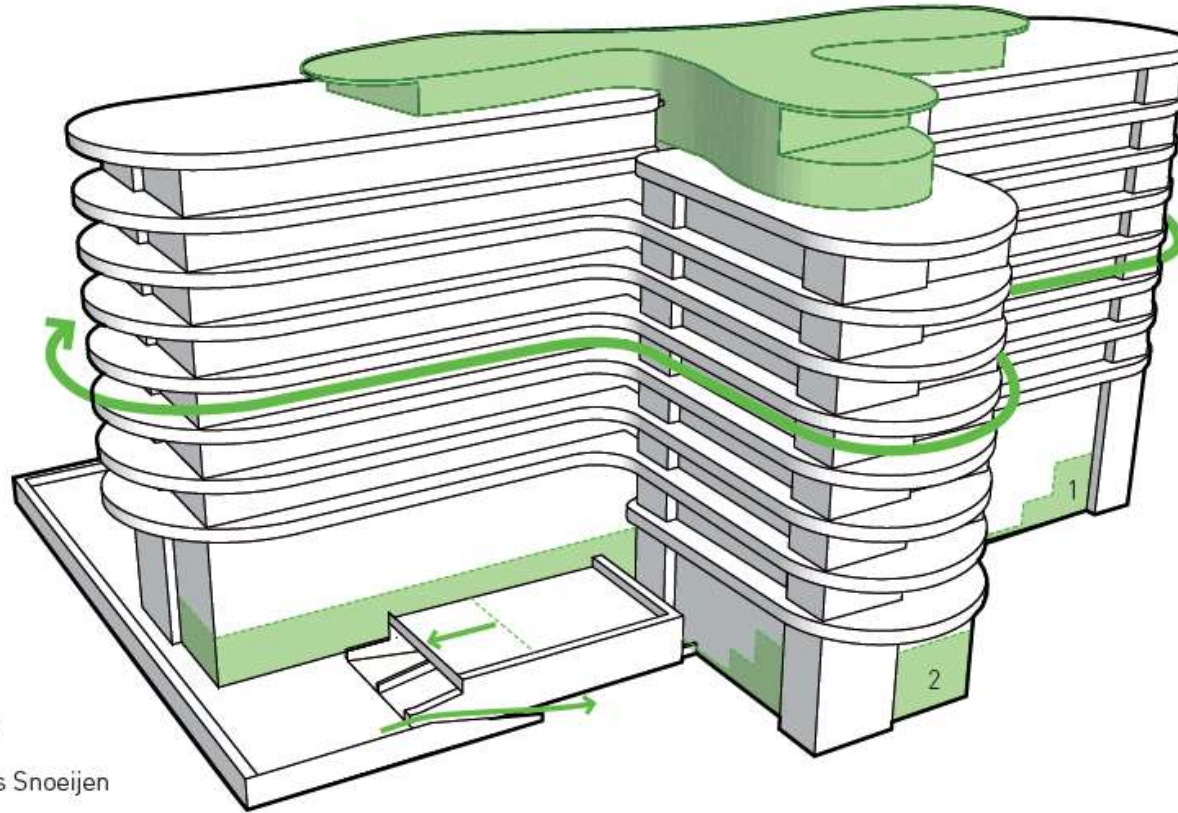


4 penthouses
180 - 220m²
dakterrassen

153 appartementen
gemeubileerd
40 - 165m²
2km balkons

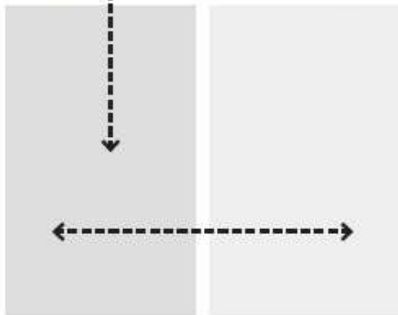
dekwoningen
gemeubileerd
terrassen
nieuwe gevels

commerciële ruimten:
1) Schäfer notarissen
2) Horecaconcept Hans Snoeijen



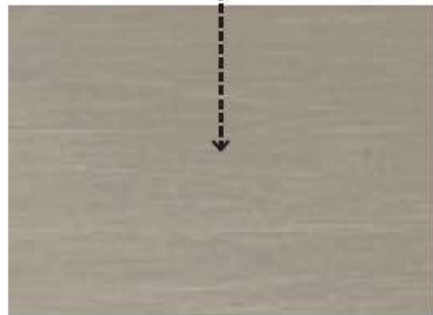


accent



bestaande betonbanden
prefab balkons wit beton
hekwerken grauwwit RAL 9002

lijf

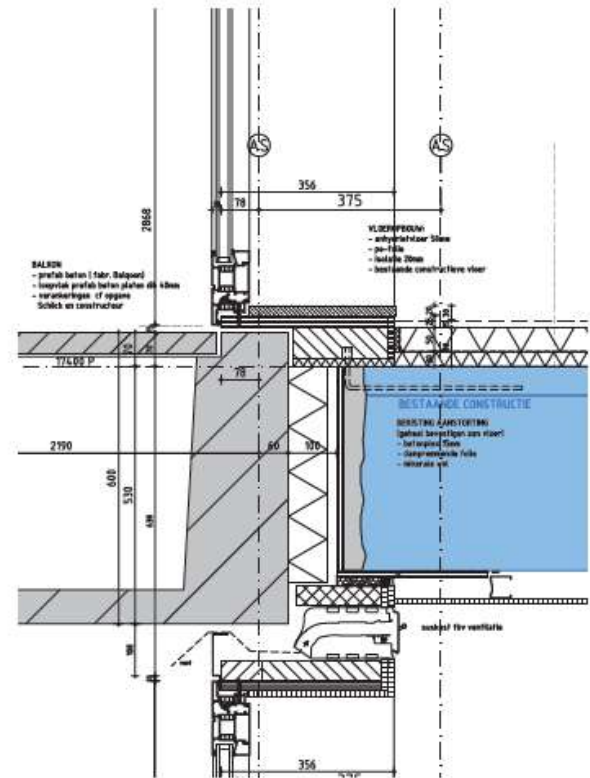
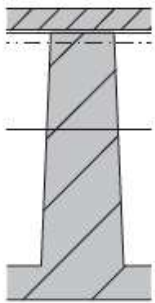
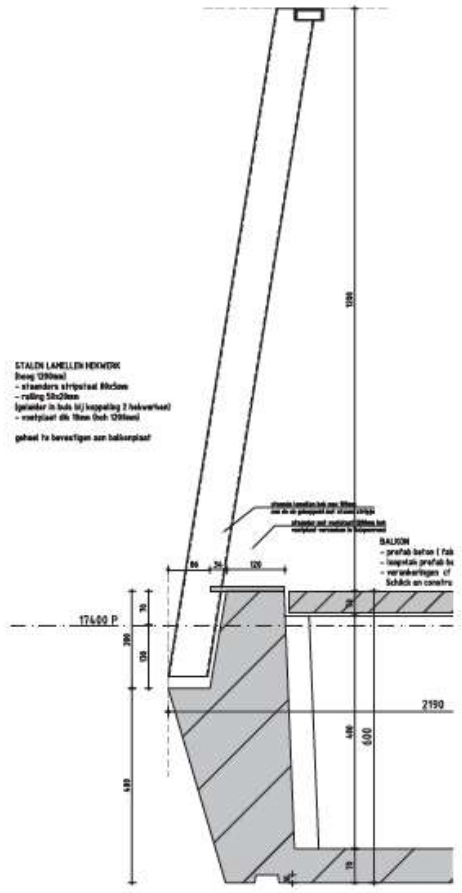
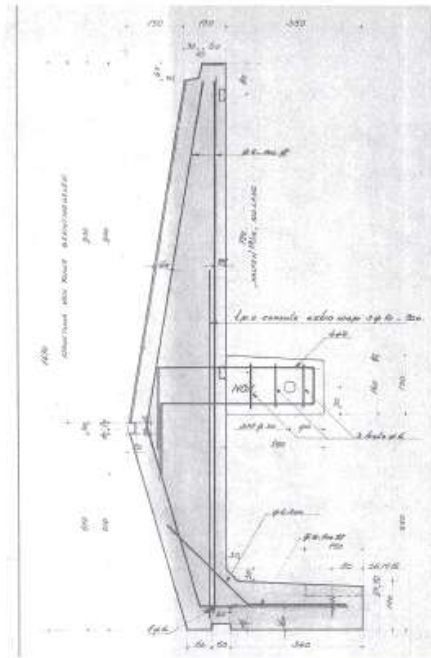


nieuwe gevel
beplating met reliëf en kozijnen
geanodiseerd aluminium C32 lichtbrons

bestaande verticale elementen

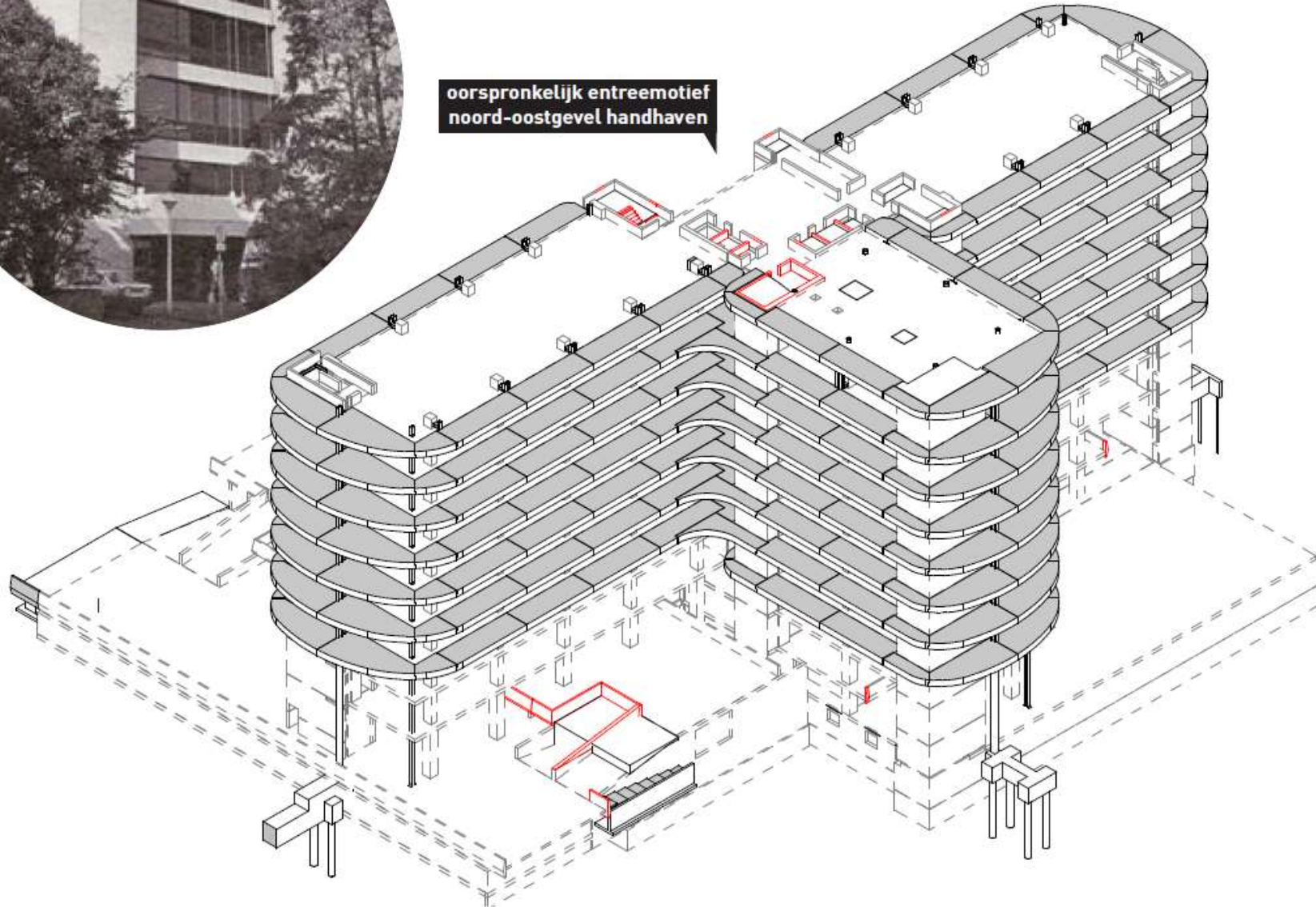


bestaande kernen
grindbeton fijn met donkere kiezel
geanodiseerde kozijnen C34 donkerbrons

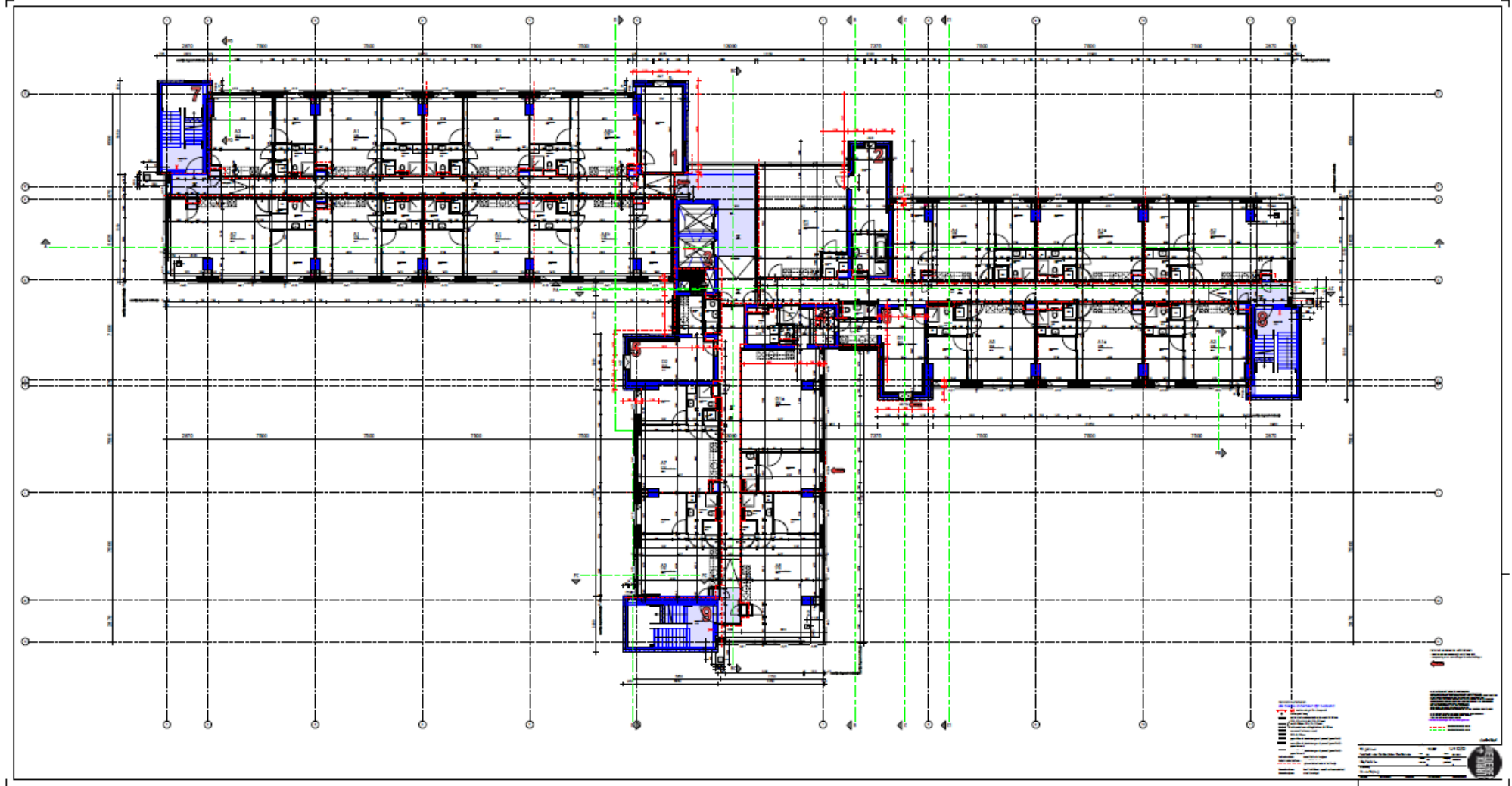




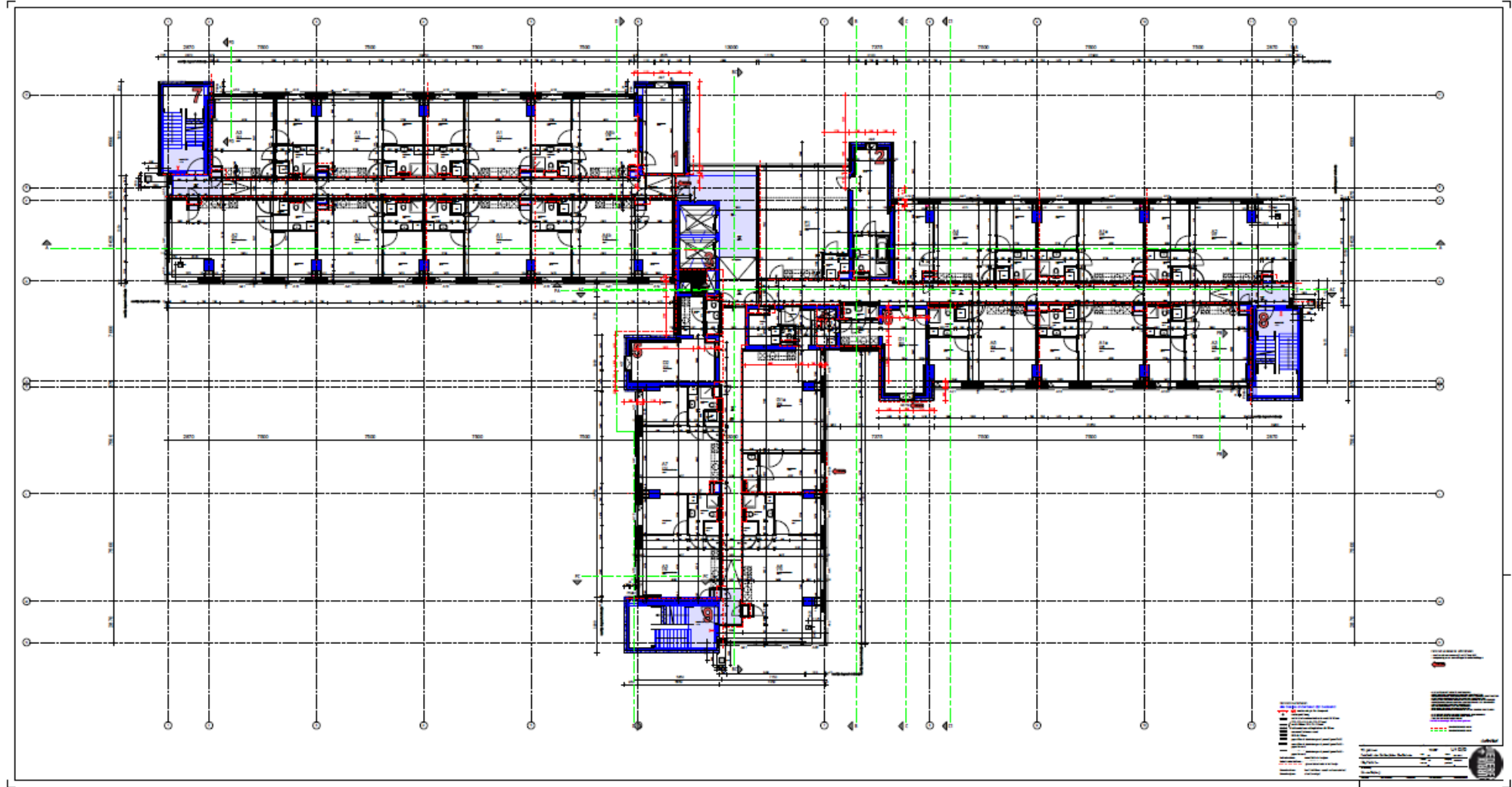
oorspronkelijk entreetotief
noord-oostgevel handhaven



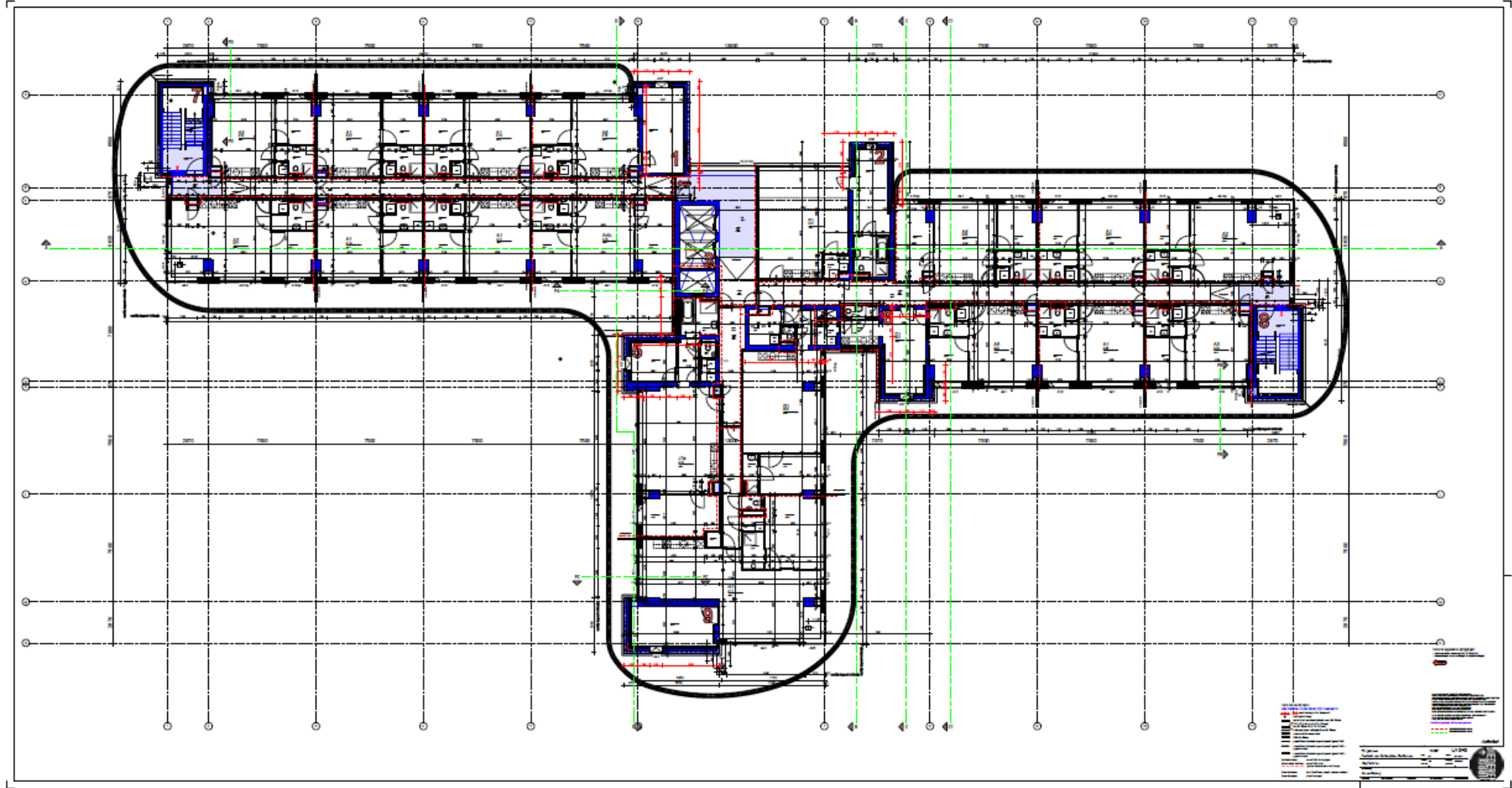
+2

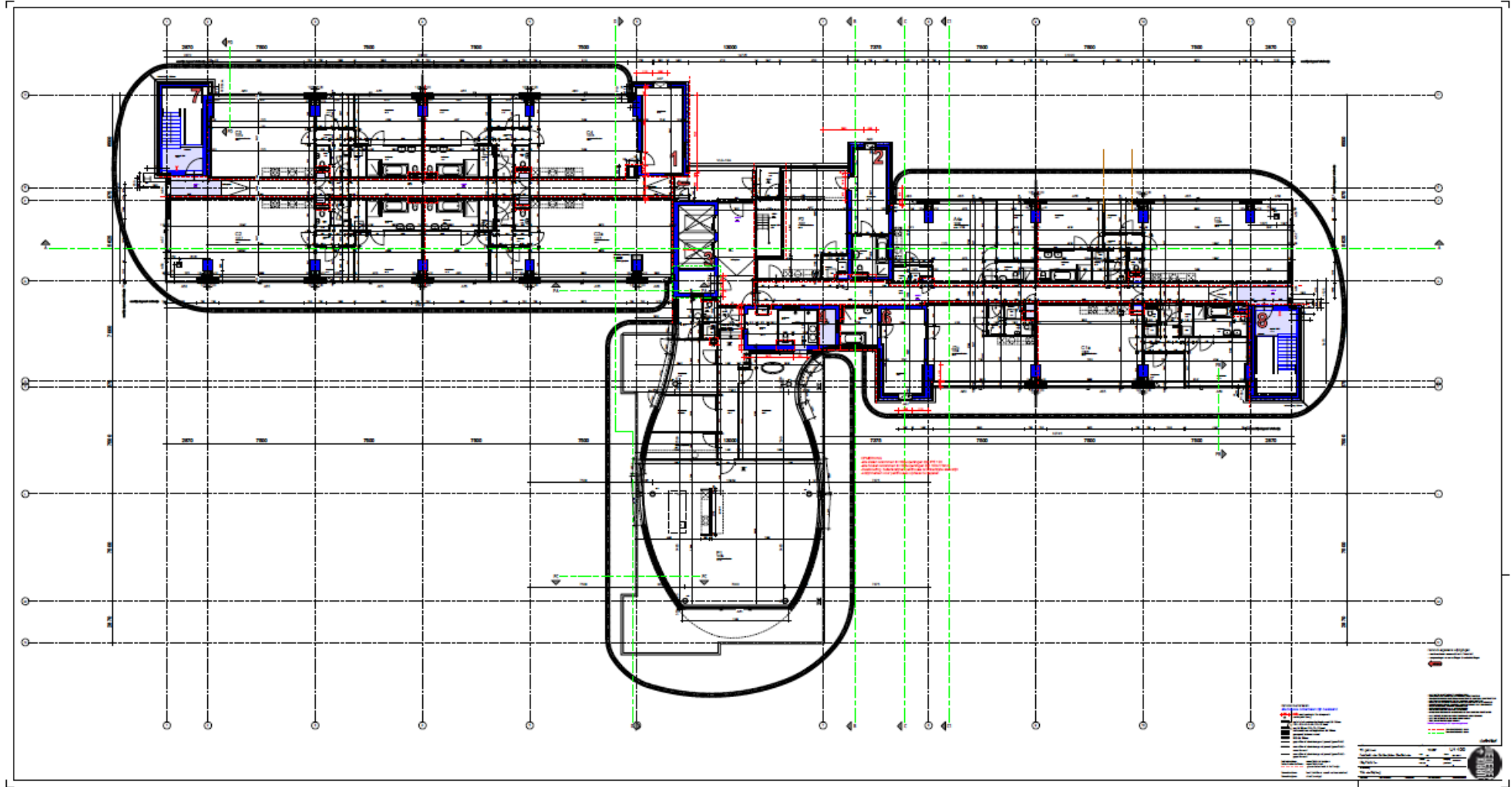


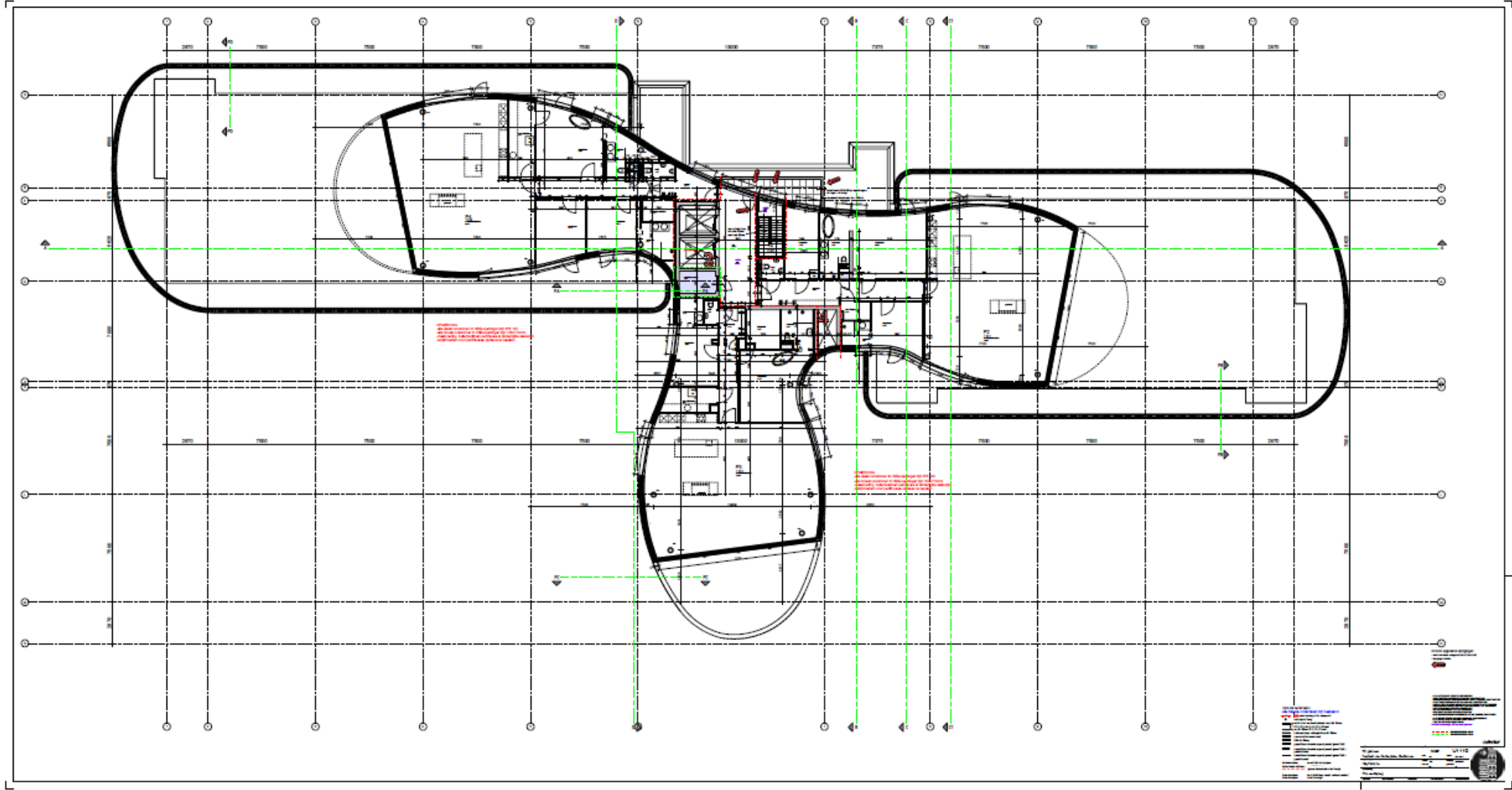
+4



+10









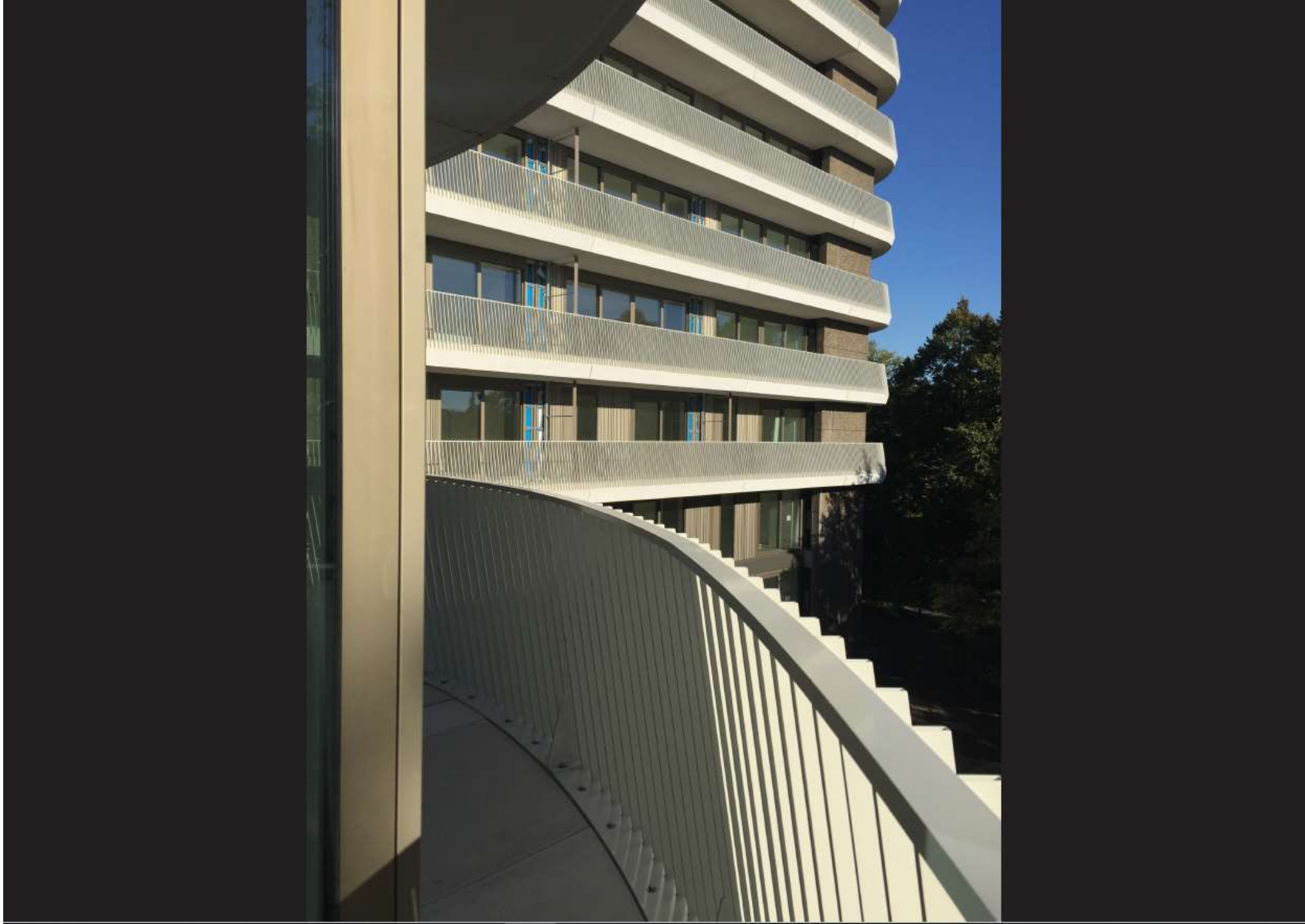








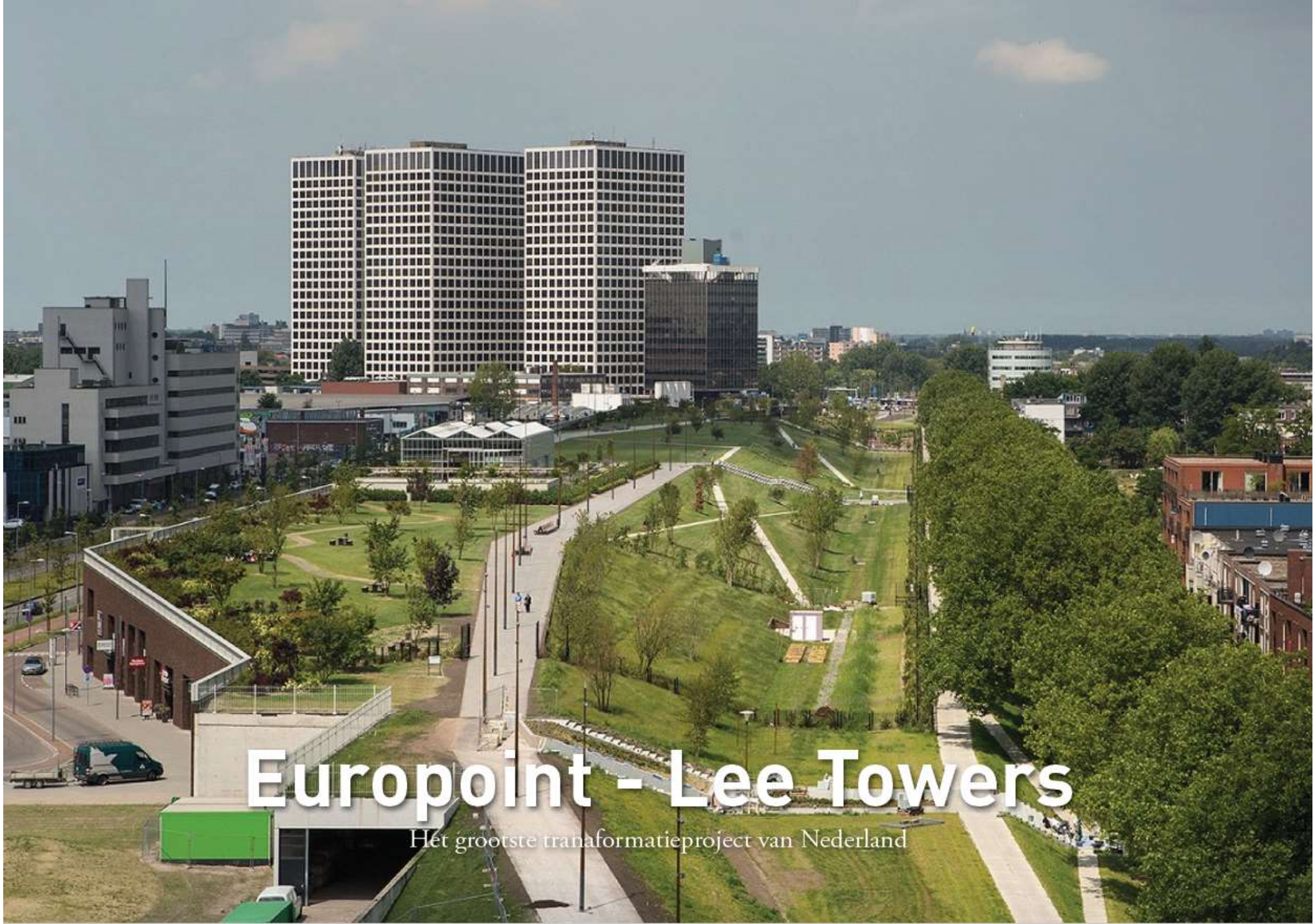






OPLEVERING OKTOBER 2018





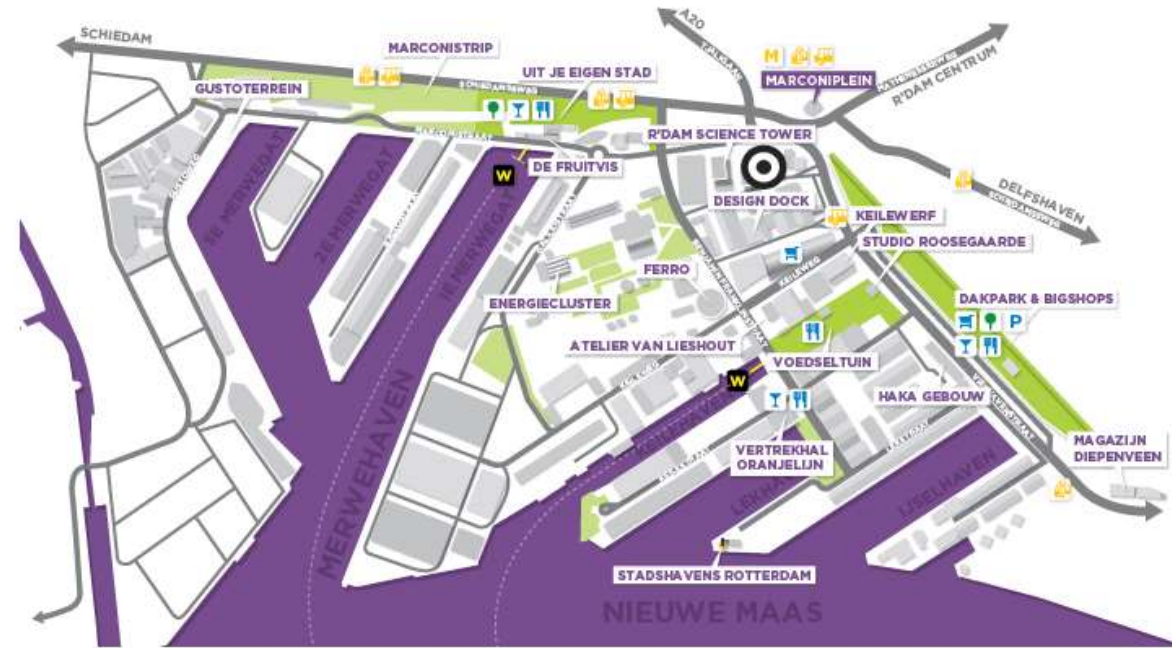
Europoint - Lee Towers

Het grootste transformatieproject van Nederland

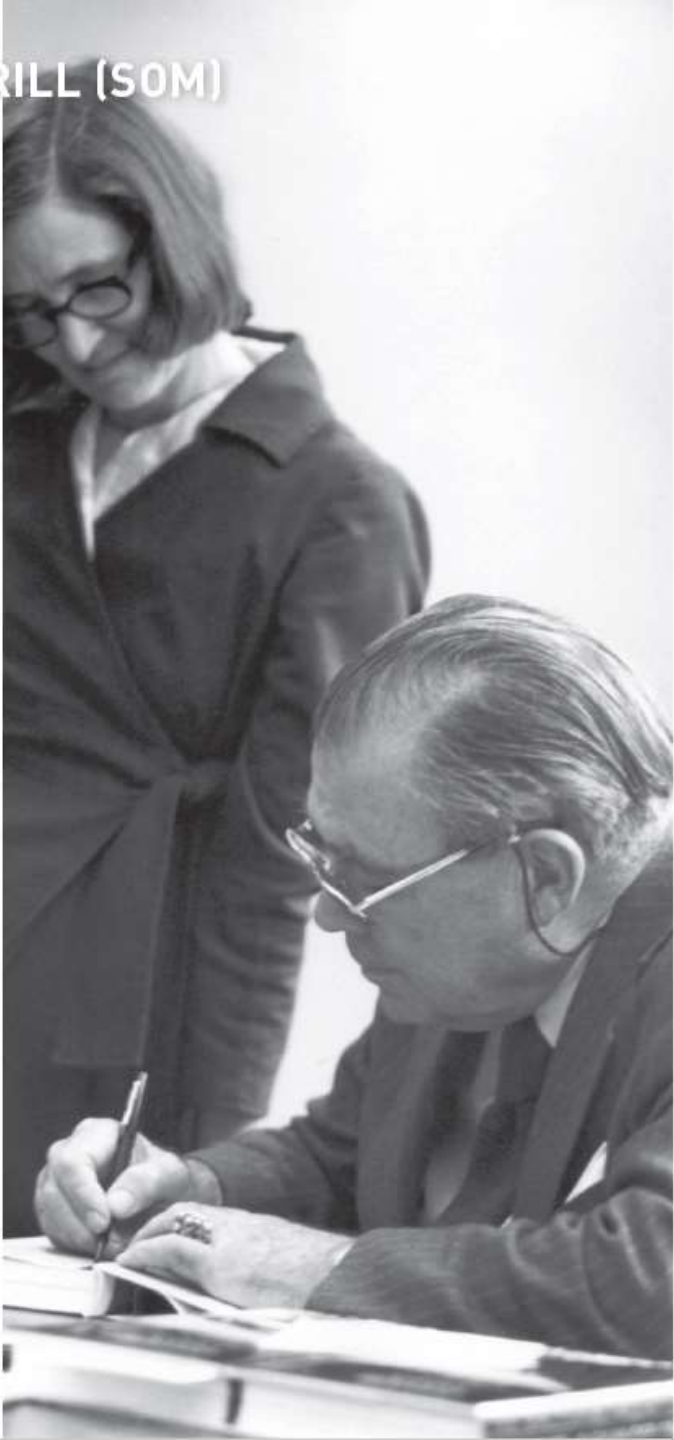


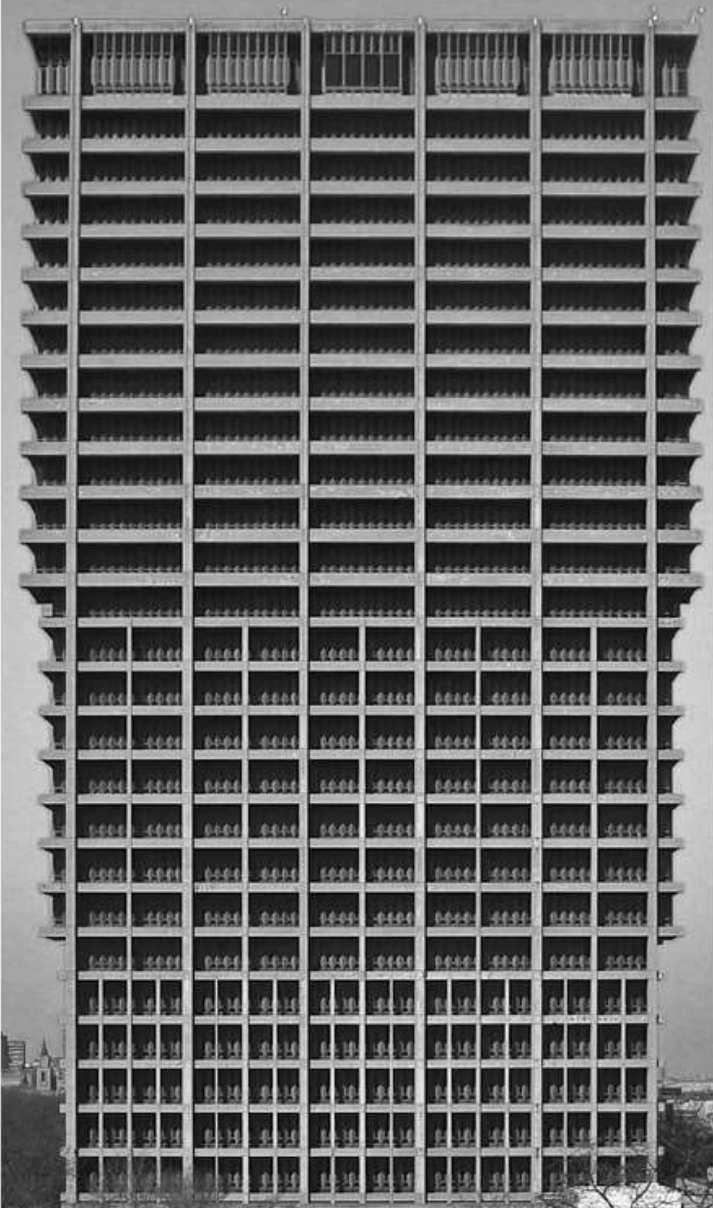
HERGEBRUIK - EUROPOINT II & III

TORENS ALS SCHAKEL MARCONIPLEIN - M4H

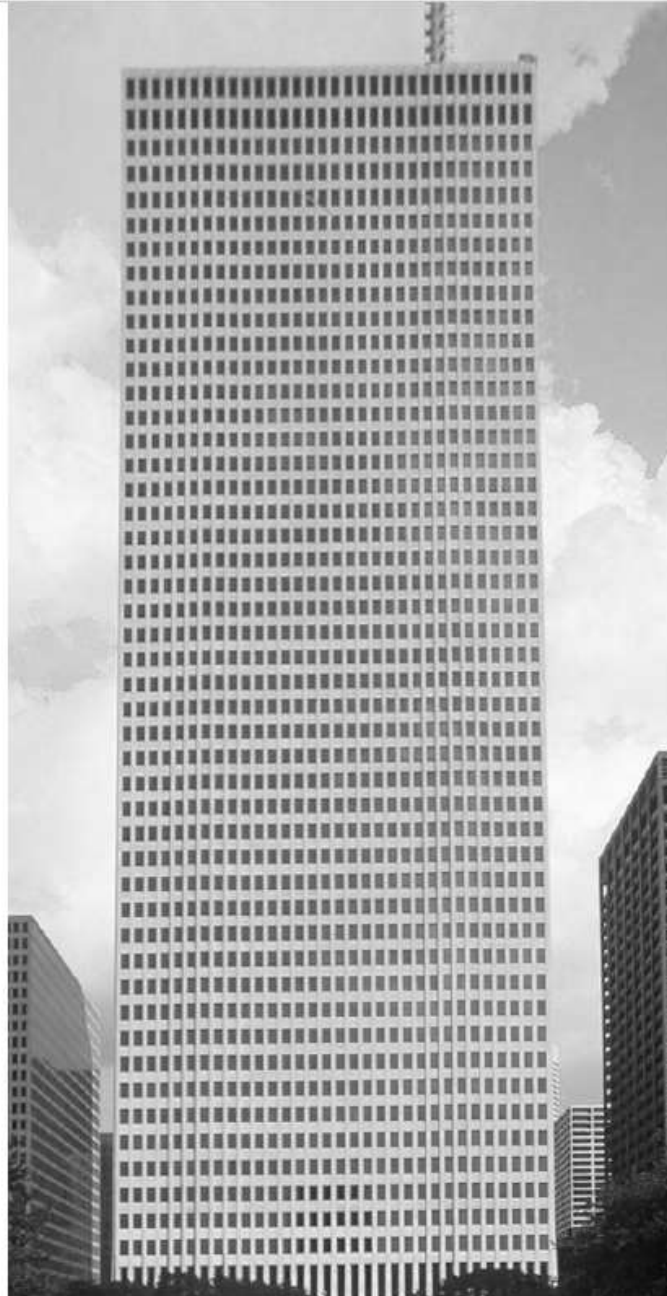


SKIDMORE, OWINGS AND MERRILL (SOM)





UNIVERSITY HALL, CHICAGO, 1965
A WORLD-CLASS UNIVERSITY, A WORLD-CLASS CITY
University hall, Chicago, 1965



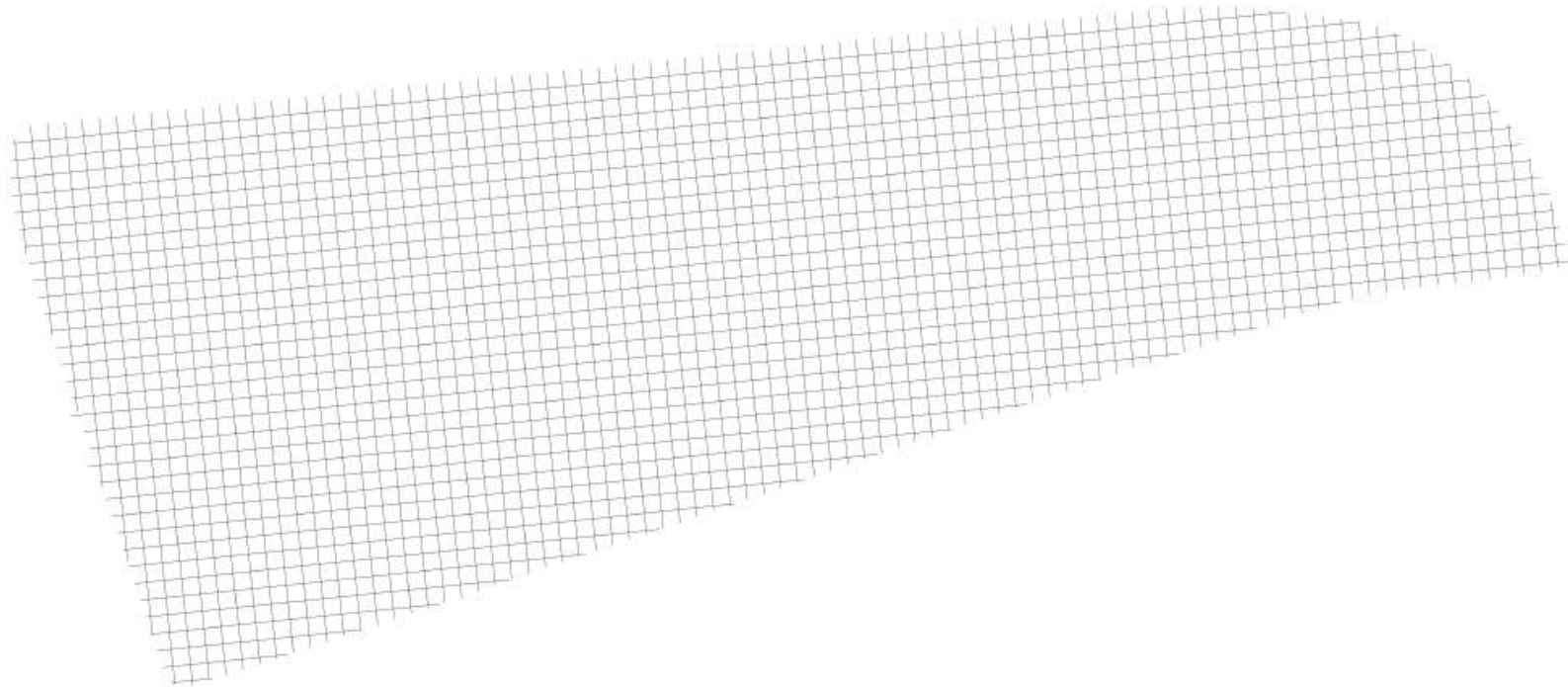
One Shell Plaza, Houston, 1971



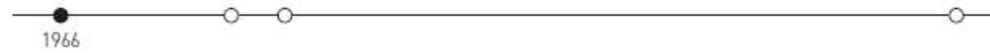
One Shell Square, New Orleans, 1972

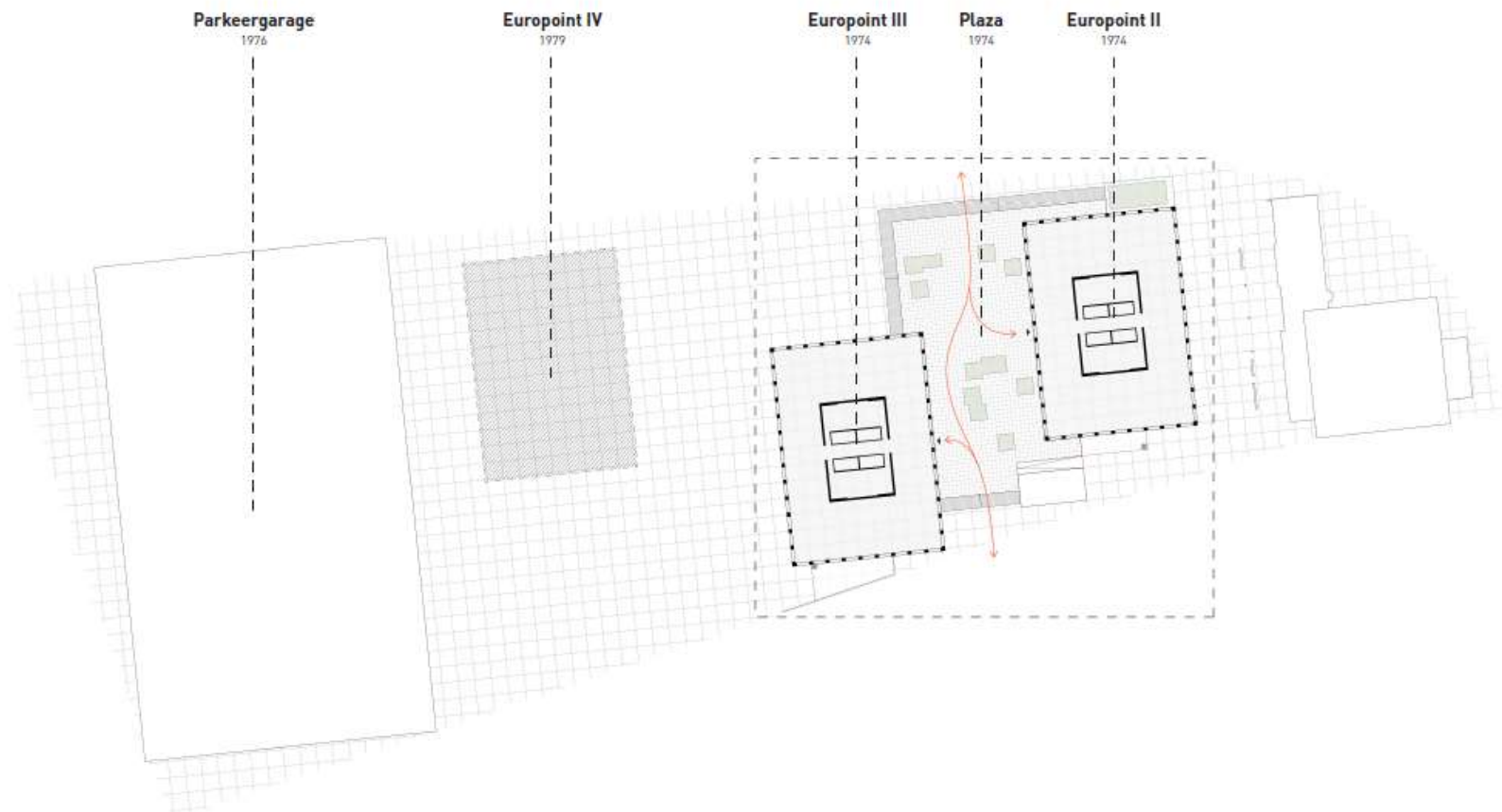
EUROPOINT 1975





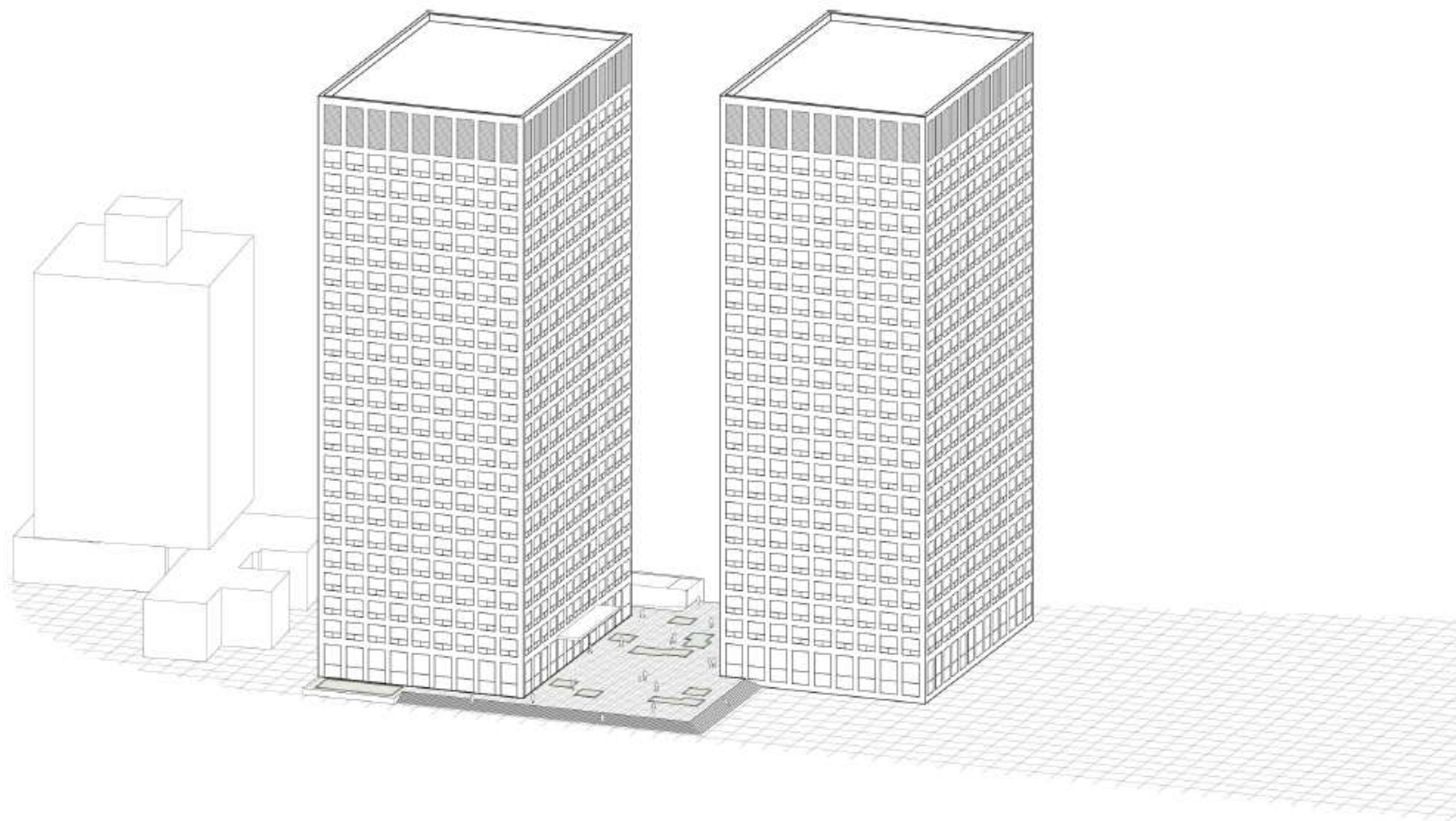
3600 grid





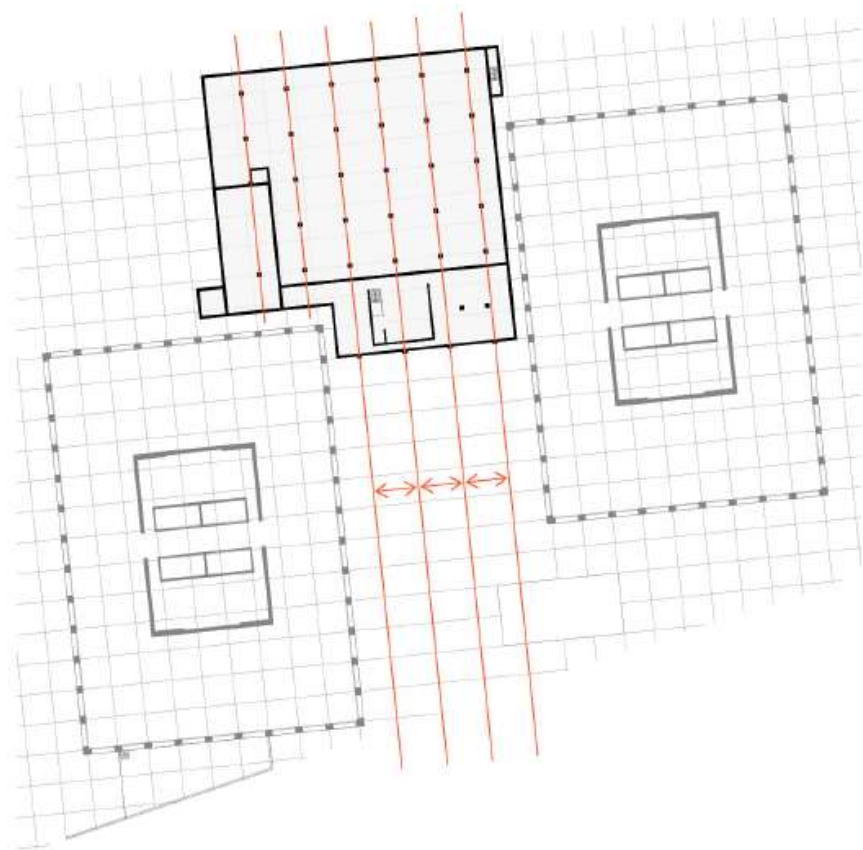
originele toestand



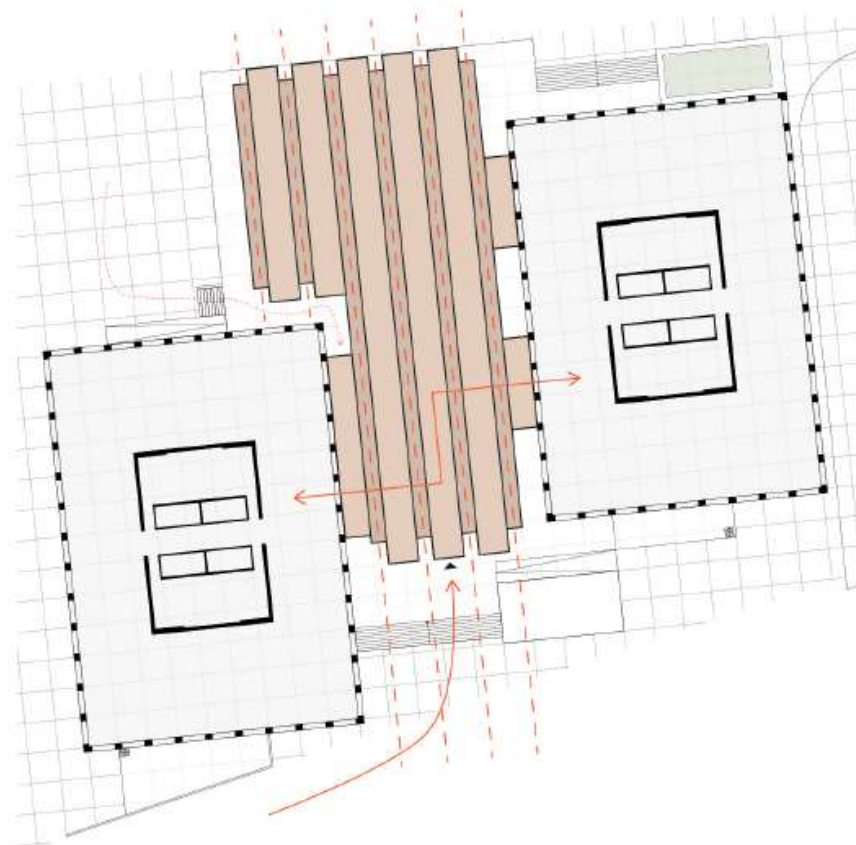


originele toestand



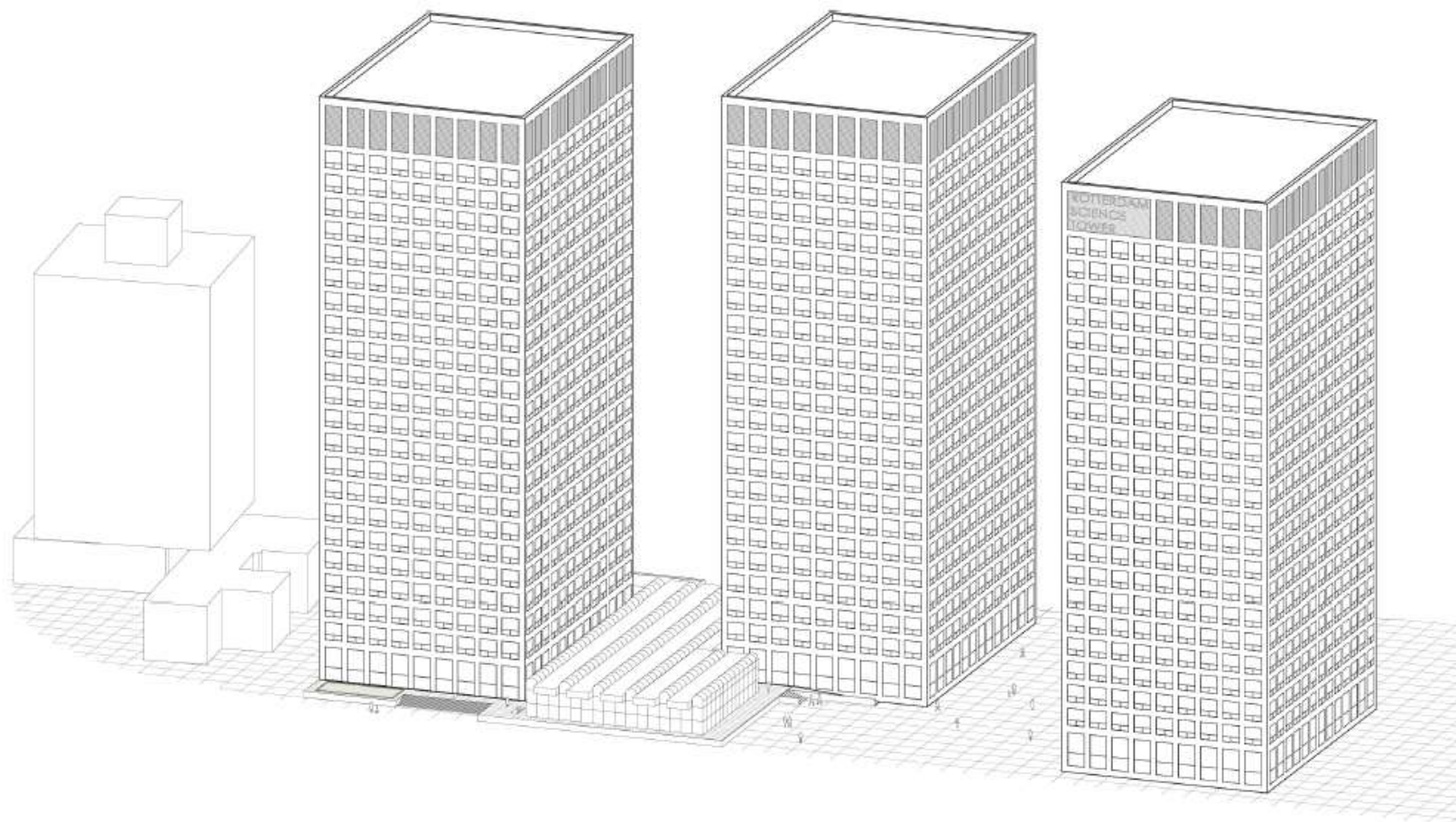


intrede gemeentelijke stadstimmerhuis - kelder - introductie van het 5400 grid



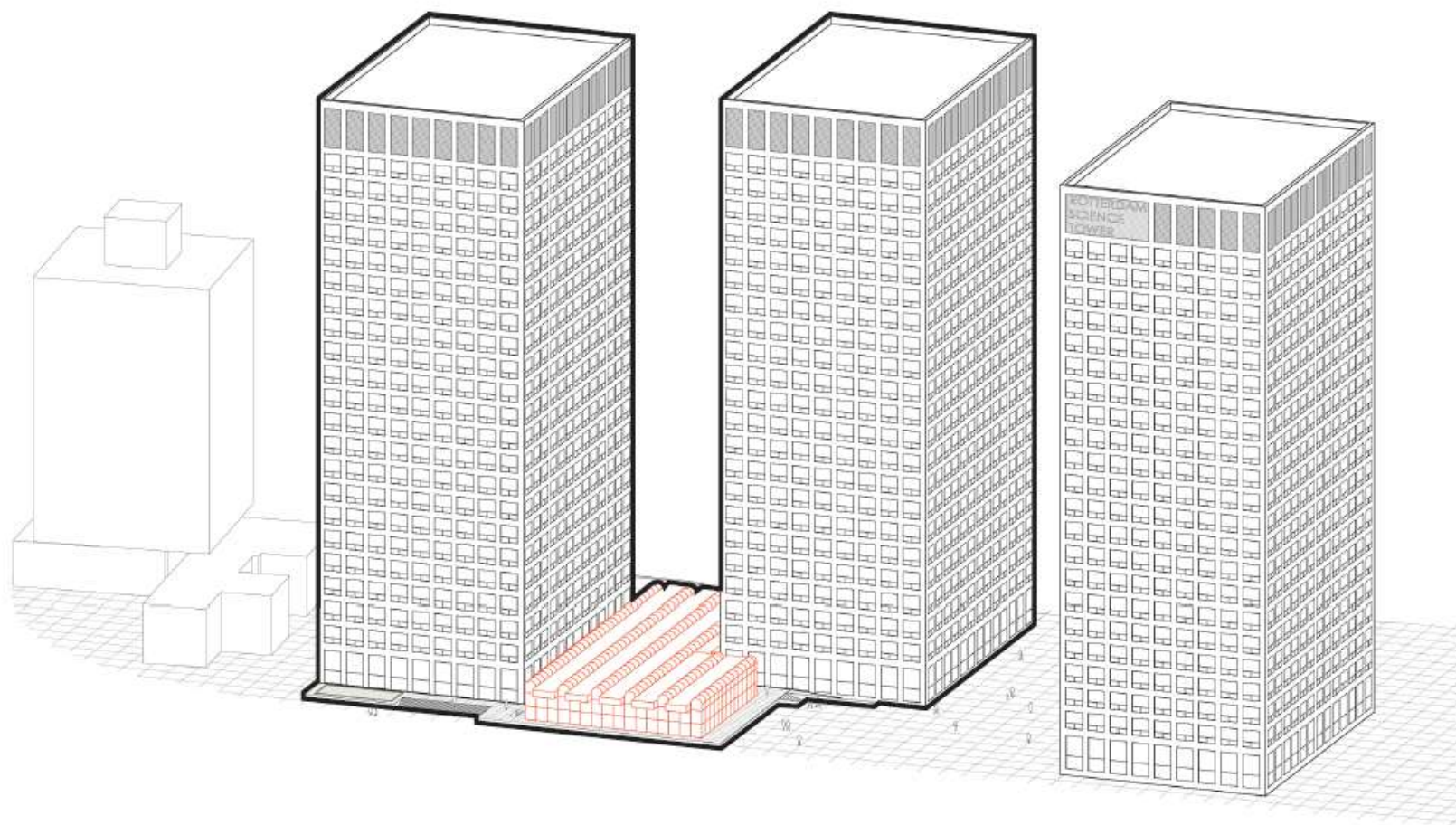
fysiek verbinden van de torens dmv een tussenbouw - opheffen van de doorsteek





huidige toestand





verwijderen van de blokkade



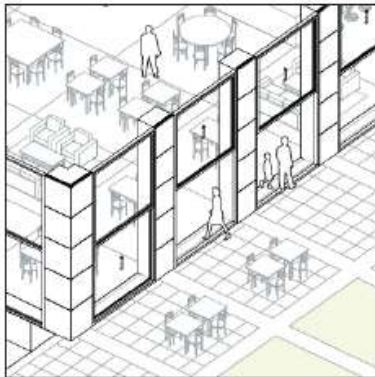
publieke ruimte



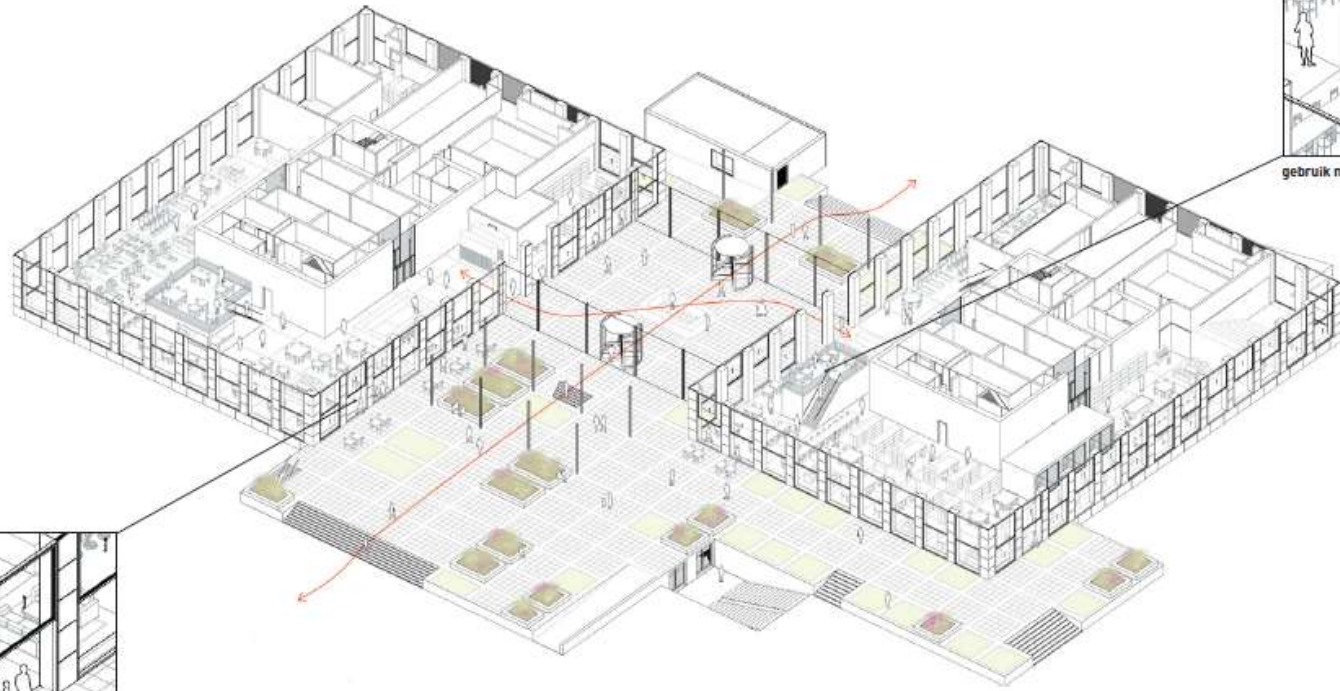
2017



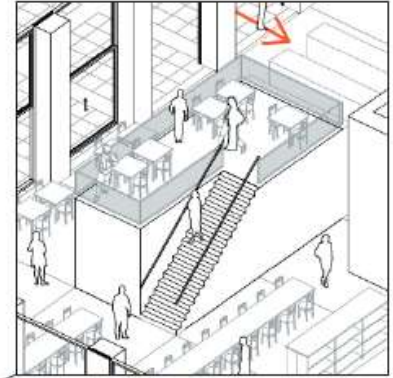
publieke functies in de plint



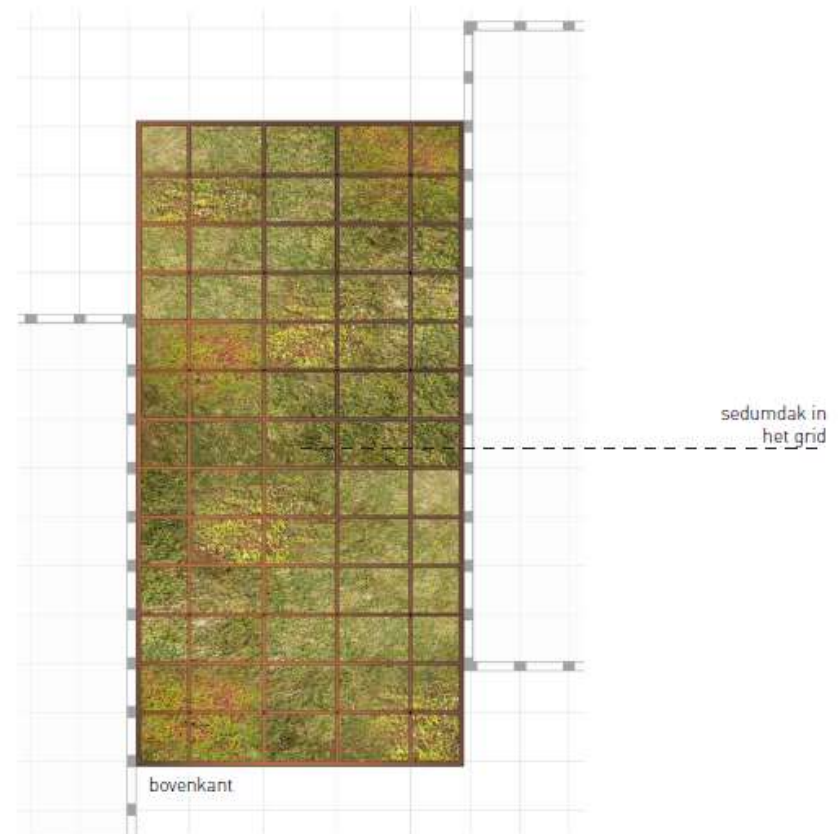
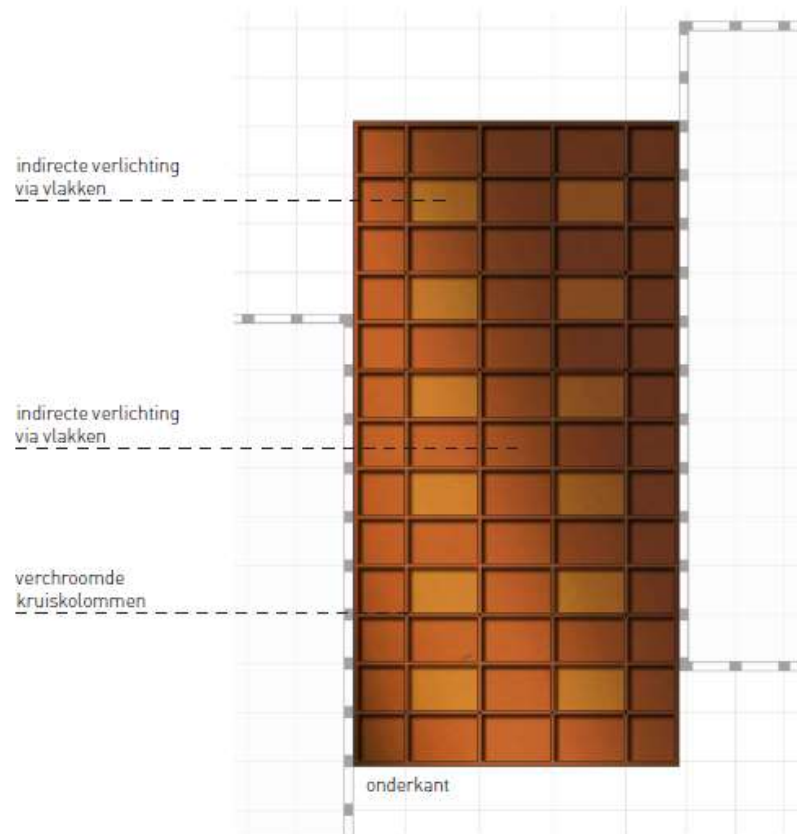
te openen puien



stedelijk interieur

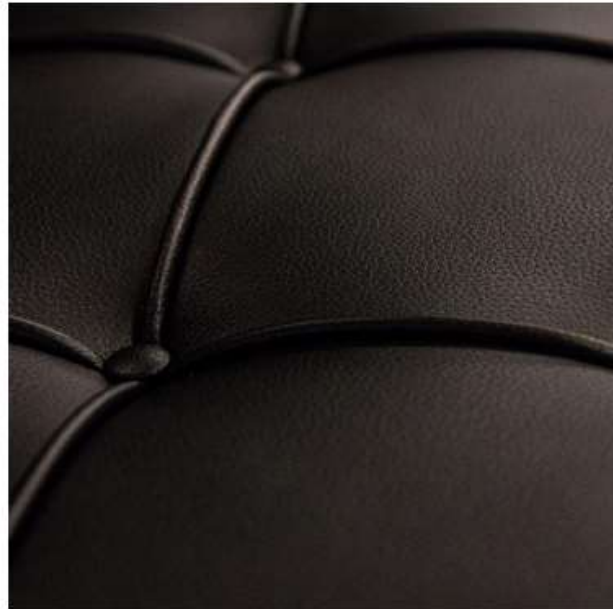


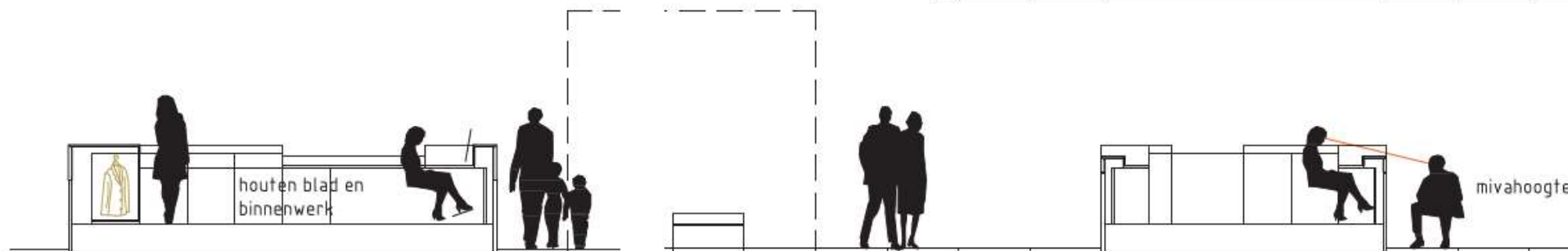
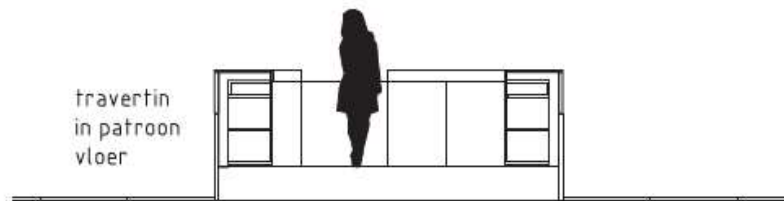
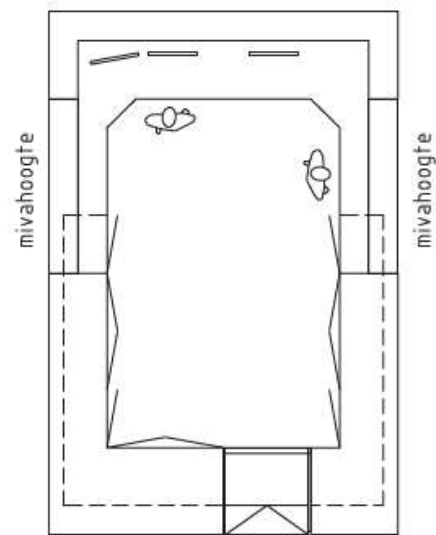
gebruik maken van de hoogte

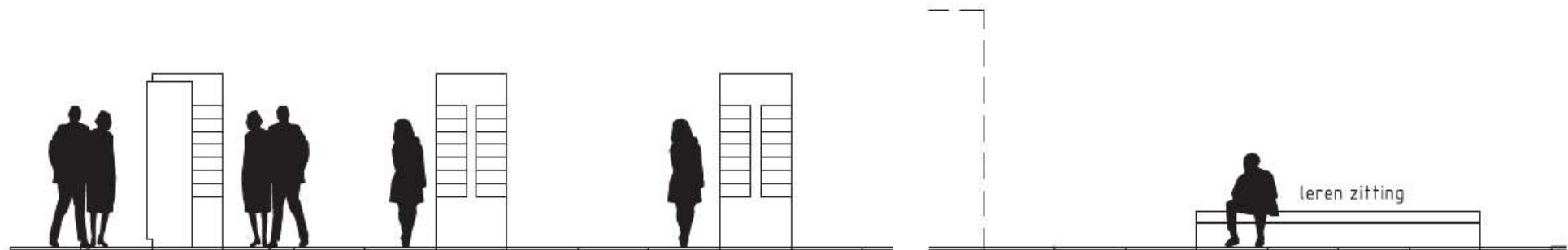
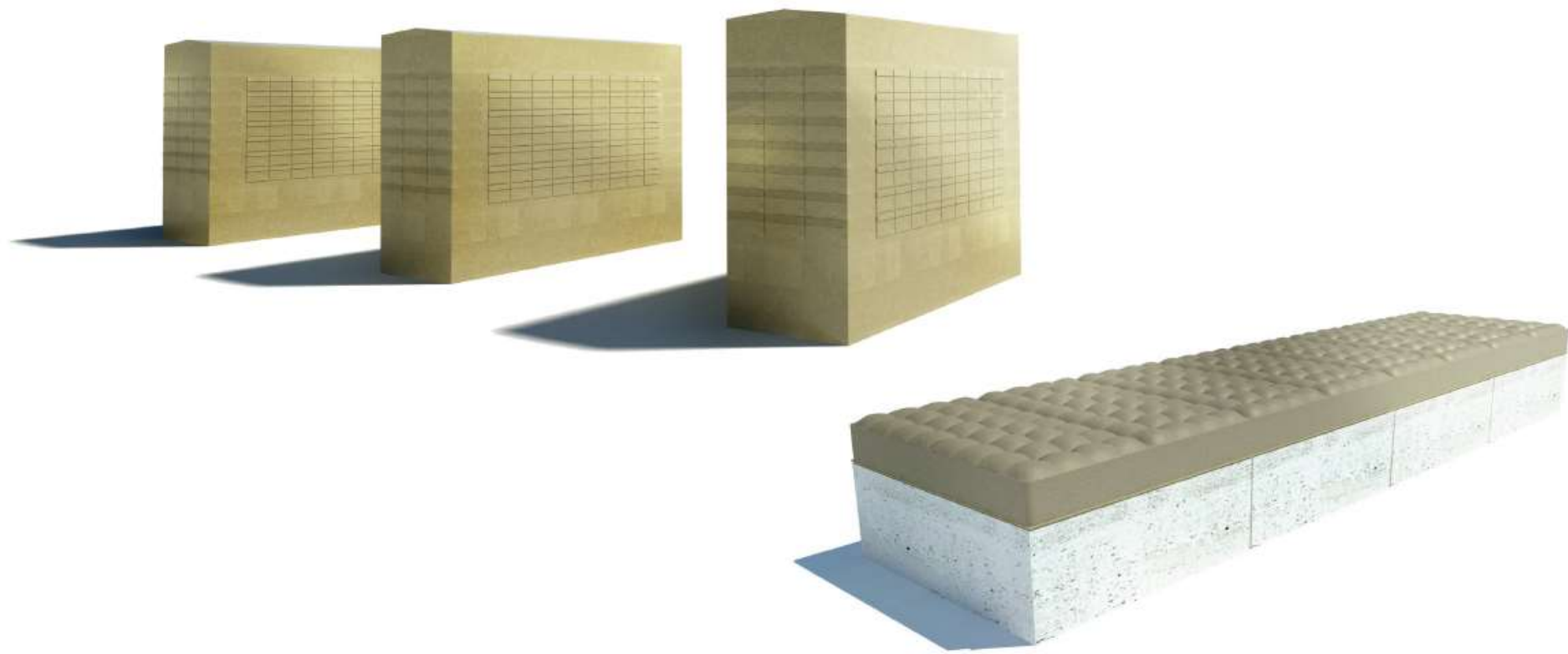


luifel als verbindend element





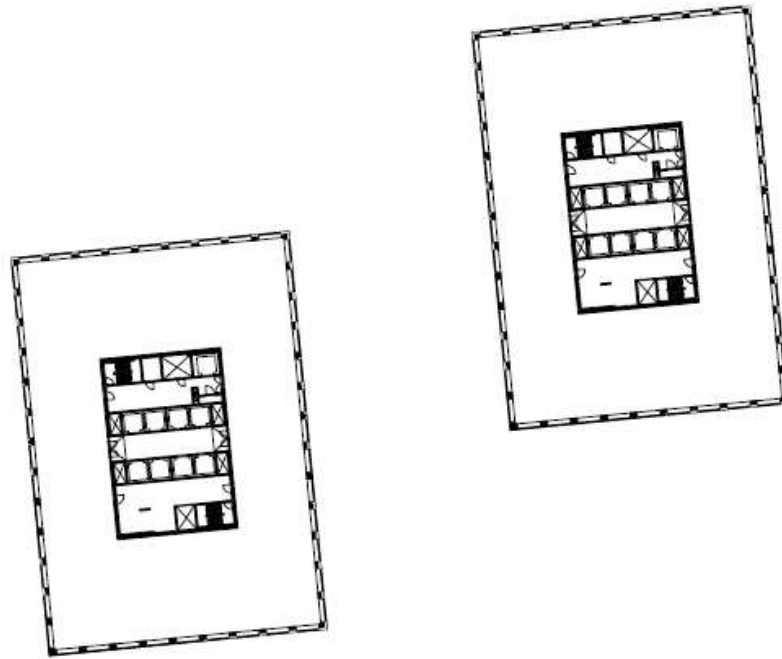




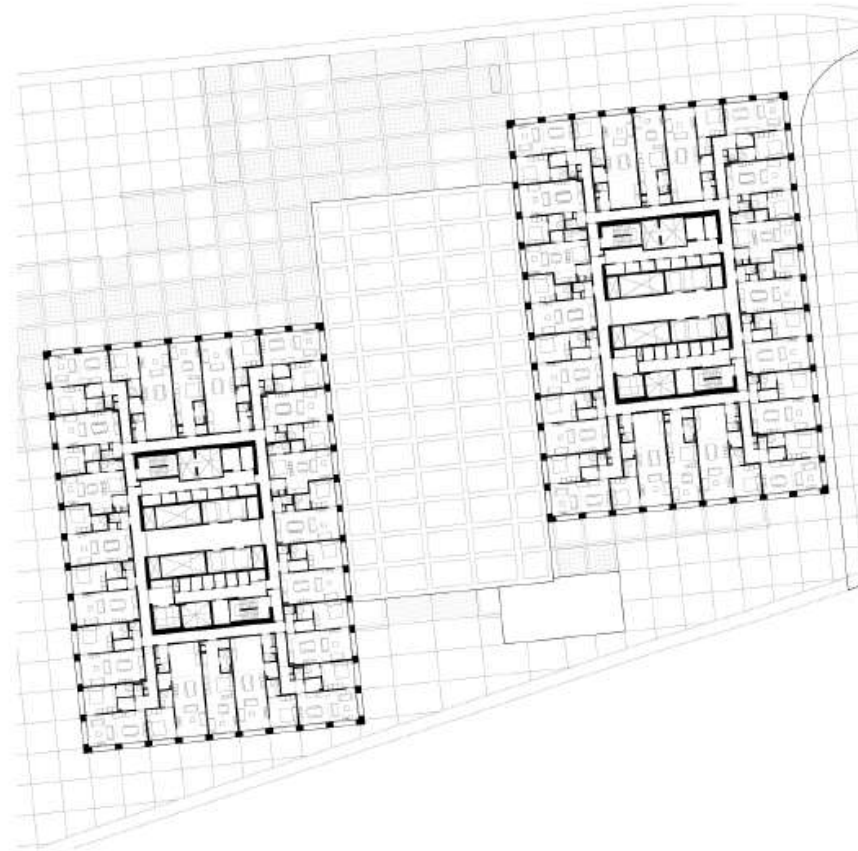
leren zitting



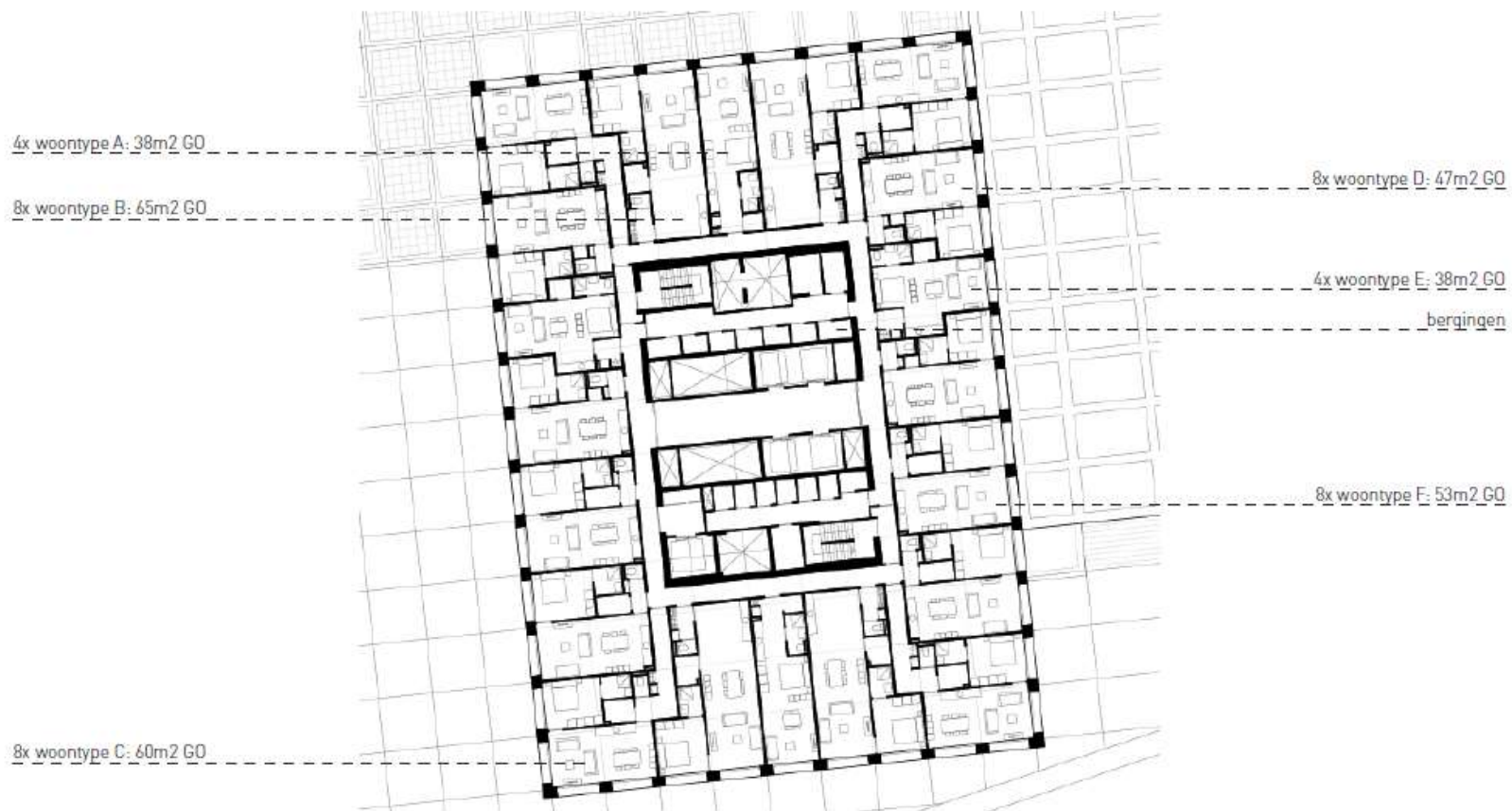




casco op stadsverwarming met vernieuwde luchtbehandeling



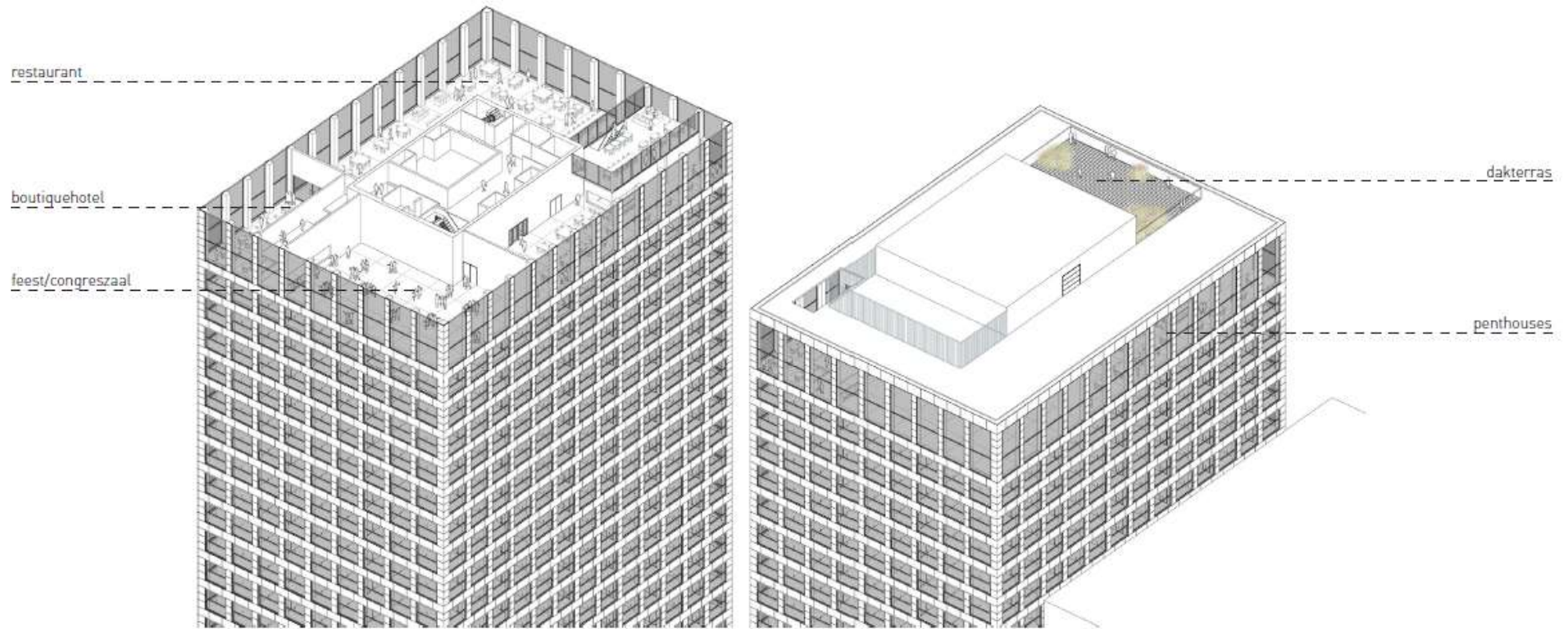
lichte inbouw t.b.v. wonen in het lijf



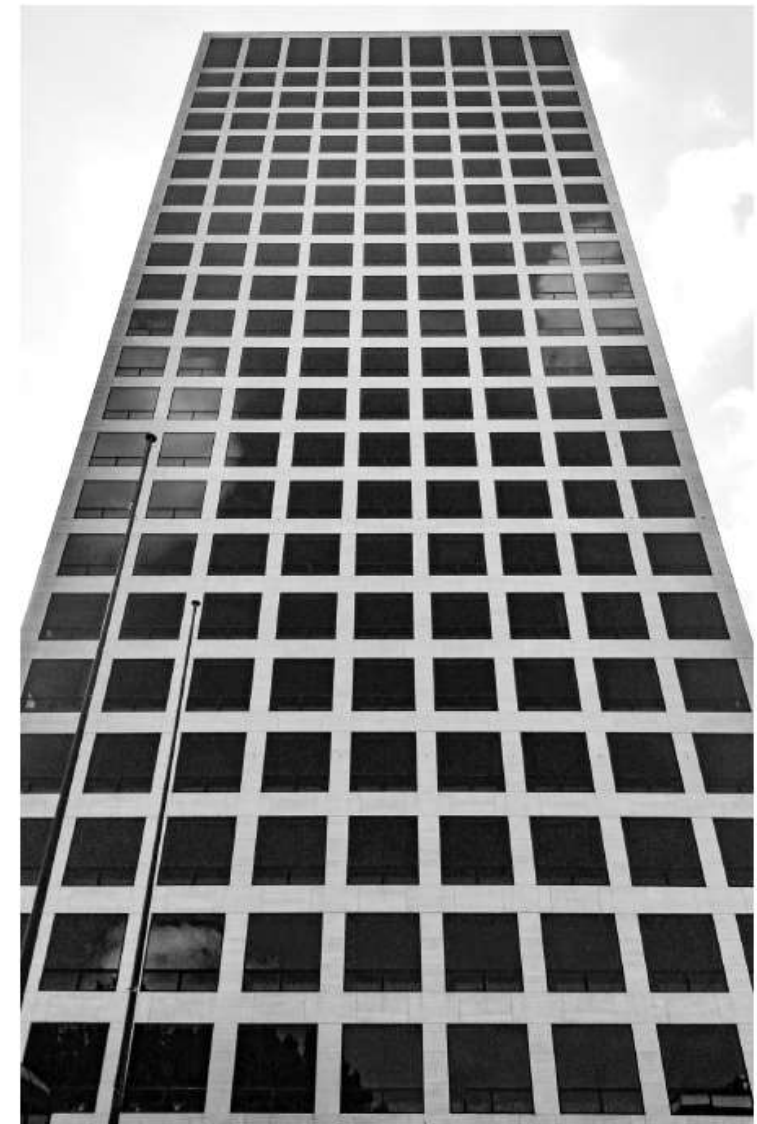
860 woningen

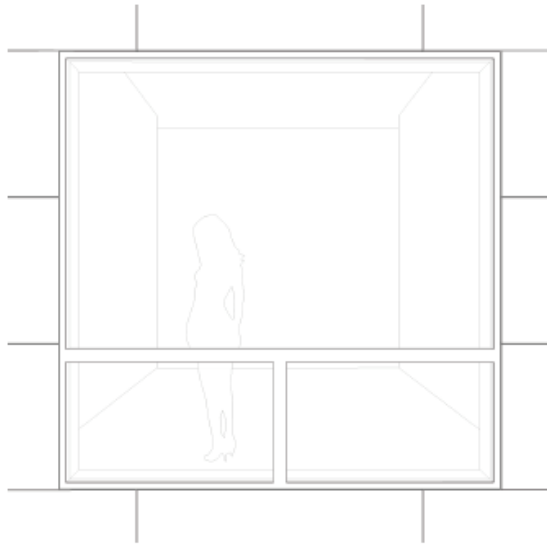




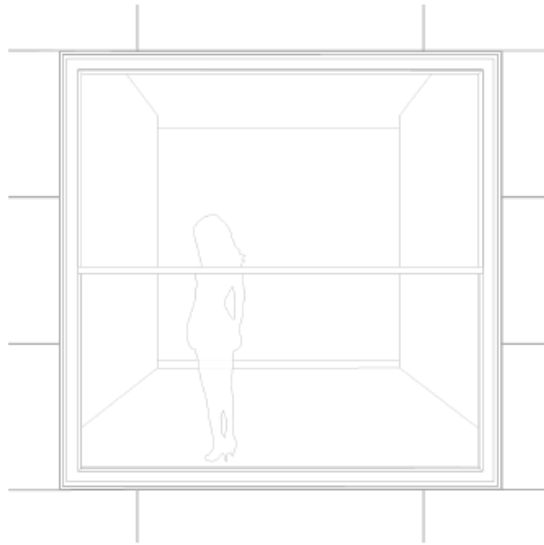


hotel, restaurant en penthouses in de kroon

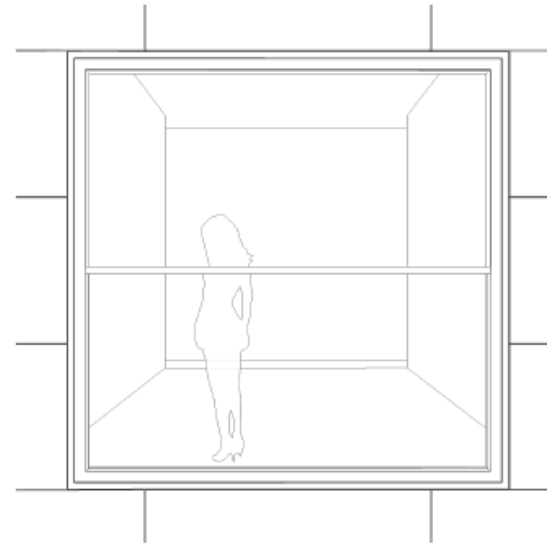




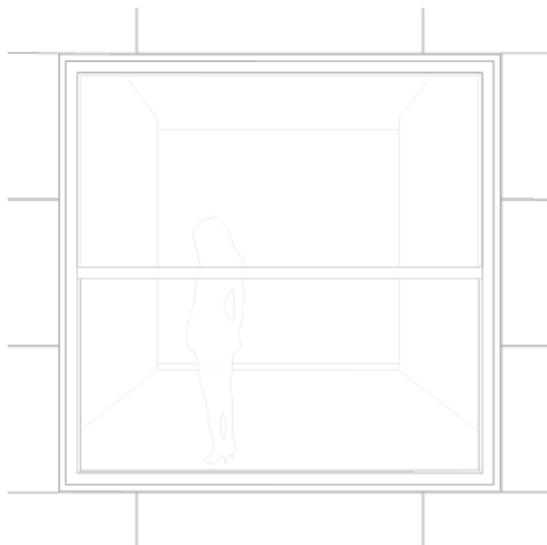
origineel



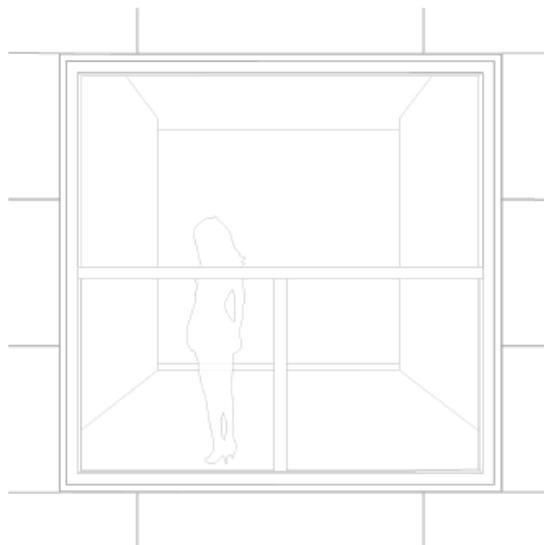
wegslippen van het bestaande kozijn



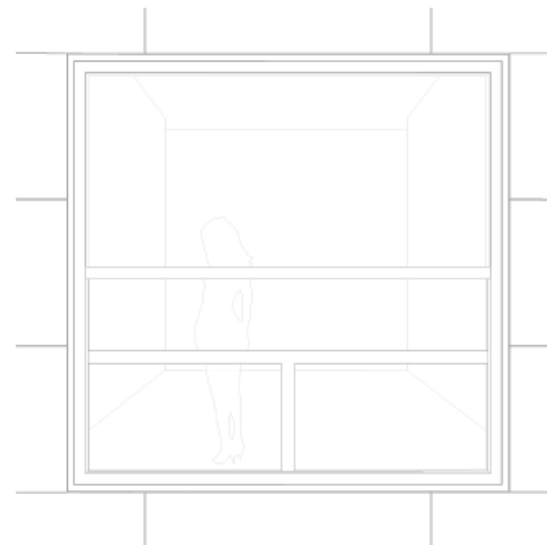
bestaande kozijn gebruiken als stelkozijn



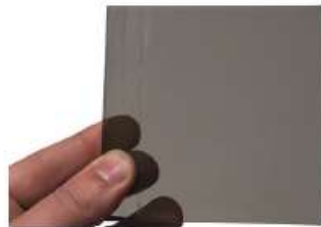
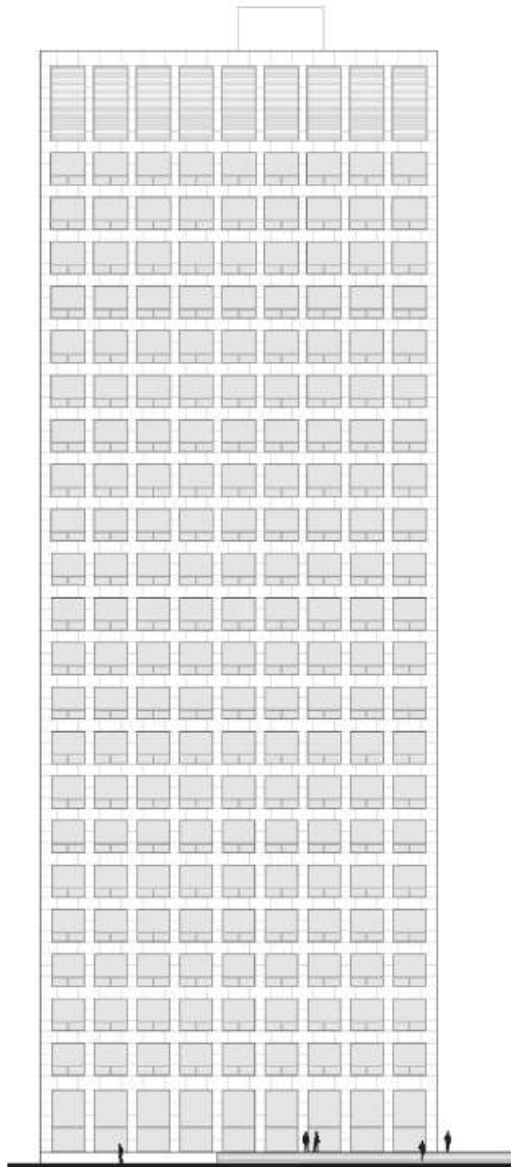
profielmaat schuifraam rondom gelijk



toevoegen van een tussenstijl in het ondervlak



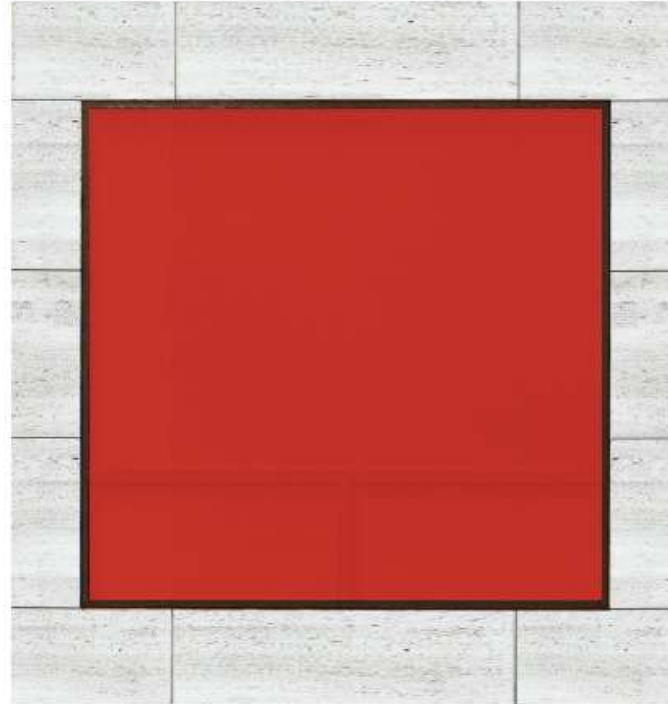
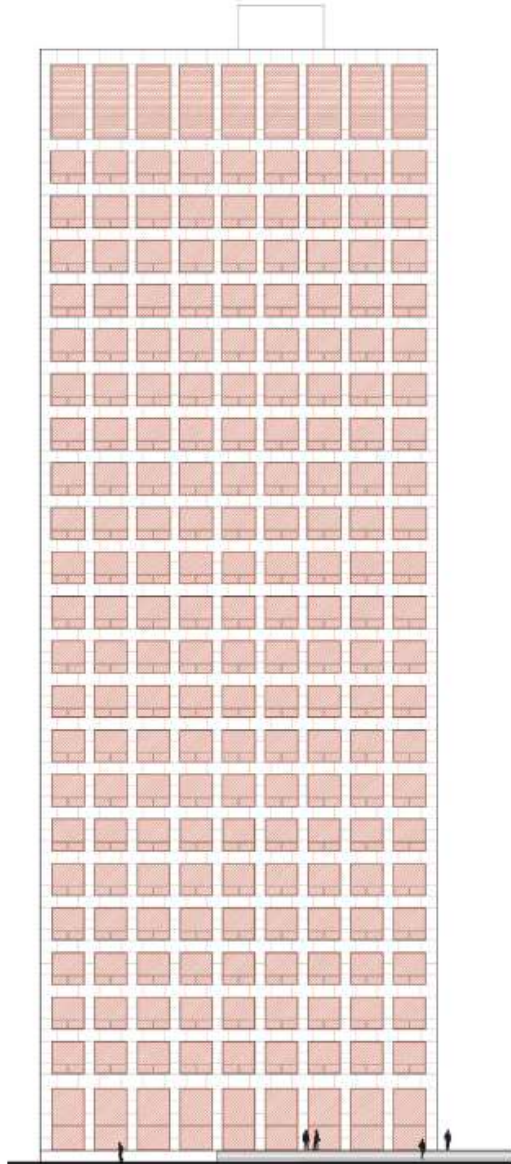
gelijke profilering als bestaand



uitsnede bestaand getint glas
glas in het lijf en de kroon getint brons, in de
plint helder glas



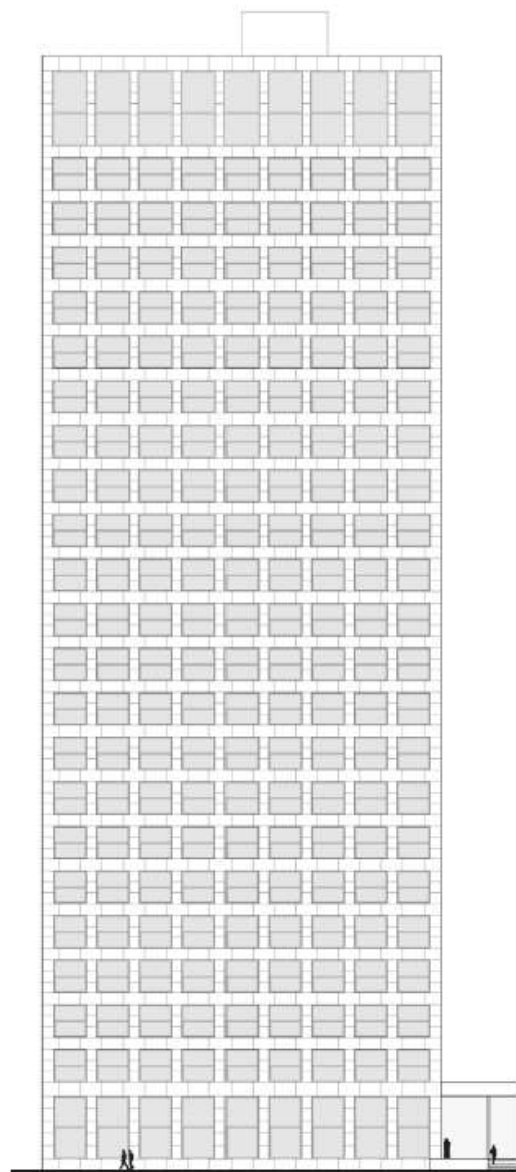
uitsnede bestaand stalen kozijn
frontaal aanzicht is donkerder wegens
verkleuring door weersinvloeden



raam als stelkozijn
glas en raamverdeling verwijderen; kozijn en waterdichting behouden als stelkozijn



C35
gecorrodeerd aluminium afwerken met een zwarte afwerking voor het maken van een schaduwwoeg



uitsnede bestaand getint glas
glas in het lijf en de kroon getint brons, in de
plint helder glas



C34
nieuwe kozijnen
schuiframen in gelijke
kleur







Resilient Architecture

seminar Renovatie & Transformatie

diederendirrix
open architecture
open urban planning

Paul Dieren
Architect / Partner
2 oktober 2018